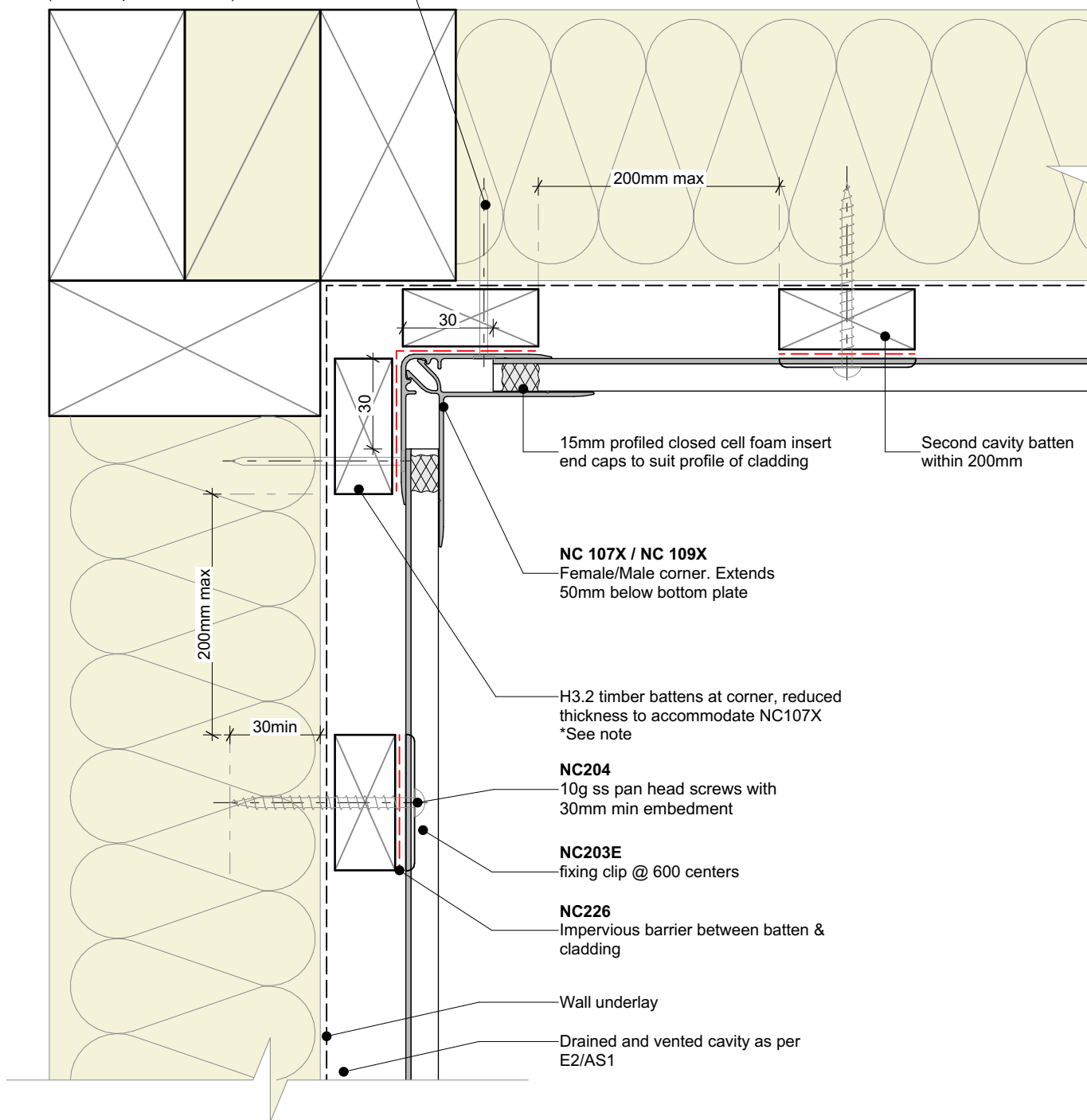


2.8x50mm hot dipped galvanised clout nails @ 600 centers.
(SS for Exposure Zone D)



Cavity batten note:

- 20mm single castellated timber battens required for all Nu-Wall installations.
- Batten to have 15° slope for moisture egress
- Allow 6mm gap between vertical and horizontal battens
- Sill and head battens to be max. 500mm with a 6mm gap to each segment
- 18mm single castellated battens are available from Nu Wall for all vertical applications to wall junctions and jambs
- Proprietary Nu-Wall Alibat is available as an alternative when a structural non-combustable cavity batten is required

Interactive assembly
instructions available

<http://wksp.nz/nw-hoc-intc>



Get WORKINGSPEC from
Apple App Store/Google Play



BRANZ Appraised
Appraisal No. 550

nu-wall
CLADDING

Nu-Wall cladding horizontal on cavity

Internal 90 deg corner using NC107X and NC109X

© 2021 copyright in this document is the property of Nu-Wall Aluminium Cladding Limited. All rights reserved. Nu-Wall is a registered trademark of Aluminium Product Brands NZ Limited

NW-HOC-013.02

Drawn by: Nu-Wall

Date: 02/07/2025

Checked by: RL, GT

Scale: 1:2 @ A4