

NC204

10g ss pan head screws with
30mm min embedment

NC203E

Fixing bracket @ 600mm centers

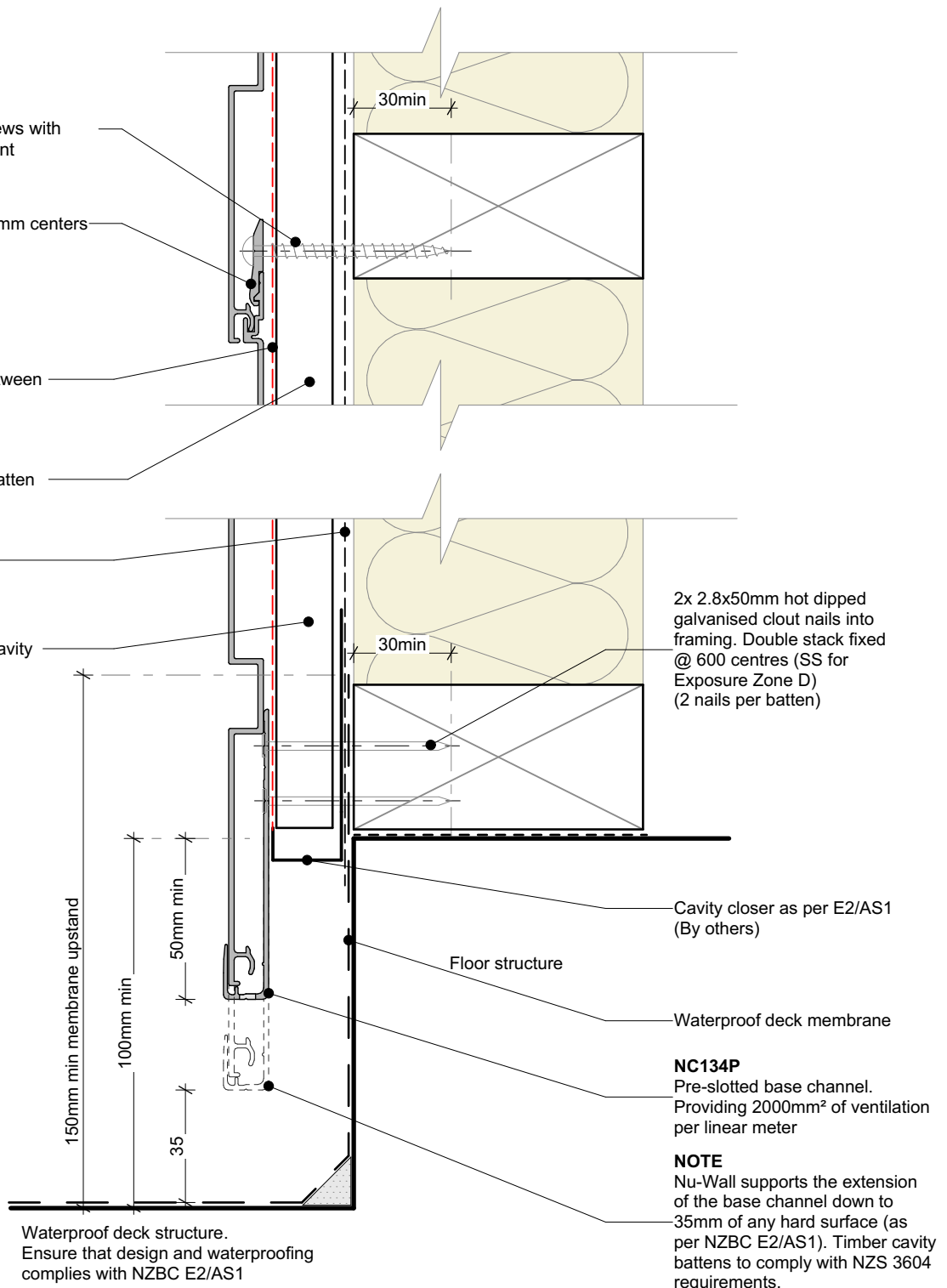
NC226

Impervious barrier between
batten & cladding

H3.2 vertical timber batten
*See note

Wall underlay

Drained and vented cavity
as per E2/AS1

**Cavity batten note:**

- 20mm single castellated timber battens required for all Nu-Wall installations.
- Batten to have 15° slope for moisture egress
- Allow 6mm gap between vertical and horizontal battens
- Sill and head battens to be max. 500mm with a 6mm gap to each segment
- 18mm single castellated battens are available from Nu Wall for all vertical applications to wall junctions and jambs
- Proprietary Nu-Wall Alibat is available as an alternative when a structural non-combustable cavity batten is required



nu-wall
CLADDING

Nu-Wall cladding horizontal on cavity

Typical base channel over waterproof deck

© 2021 copyright in this document is the property of Nu-Wall Aluminium Cladding Limited. All rights reserved. Nu-Wall is a registered trademark of Aluminium Product Brands NZ Limited

NW-HOC-007.02

Drawn by: Nu-Wall

Date: 02/07/2025

Checked by: RL, GT

Scale: 1:2 @ A4