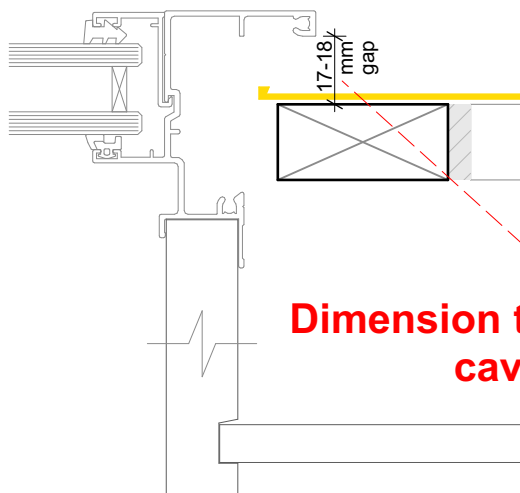
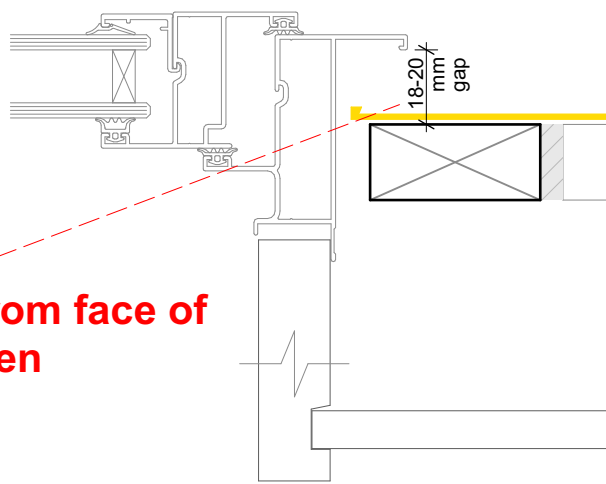


Hollow Fin Joinery



Solid Fin Joinery



Dimension taken from face of cavity batten

Cavity batten note:

- 20mm single castellated timber battens required for all Nu-Wall installations.
- Batten to have 15° slope for moisture egress
- Allow 6mm gap between vertical and horizontal battens
- Sill and head battens to be max. 500mm with a 6mm gap to each segment
- 18mm single castellated battens are available from Nu Wall for all vertical applications to wall junctions and jambs
- Proprietary Nu-Wall Alibat is available as an alternative when a structural non-combustable cavity batten is required



Joinery Setout for Vertical & Horizontal Boards on Cavity

© 2021 copyright in this document is the property of Nu-Wall Aluminium Cladding Limited. All rights reserved. Nu-Wall is a registered trademark of Aluminium Product Brands NZ Limited

NWC-008	
Drawn by: Nu-Wall	Date: 25/02/2025
Checked by: RL, GT	Scale: 1:2 @ A4