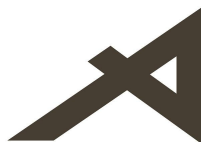




NU-WALL EXTRUDED ALUMINIUM CLADDING

Installation Specifications – Vertical orientation

- 1. NW-V001; Base channel & fixing detail**
- 2. NW-V002; Base channel over timber floor**
- 3. NW-V003; Base channel over waterproof deck**
- 4. NW-V004; Base channel / external 90° corner isometric**
- 5. NW-V005; External 90° corner**
- 6. NW-V006; Internal 90° corner**
- 7. NW-V007; Inter-storey horizontal drainage joint**
- 8. NW-V008; Window sill section**
- 9. NW-V009; Window jamb section**
- 10. NW-V010; Window head section**
- 11. NW-V011; Window head / jamb / sill soaker flashing detailing**
- 12. NW-V012; Window head flashing end detail**
- 13. NW-V013; Meter box sill section**
- 14. NW-V014; Meter box jamb section**
- 15. NW-V015; Meter box head section**
- 16. NW-V016; Soffit trim section**
- 17. NW-V017; Pipe penetration**
- 18. NW-V018; Roof / wall junction**
- 19. NW-V019; Parapet flashing**
- 20. NW-V020; Deck junction**
- 21. NW-V021; Gutter / wall junction**



BRANZ Appraised
Appraisal No.556 [2007]

NOTE:

Standard fixing spec. for timber framing shown.
Can vary depending upon substrate and wind load.

Building Wrap
Compliant with
E2/AS1 Table 23

NC203

Universal Fixing Bracket @ 600
centers

NC204

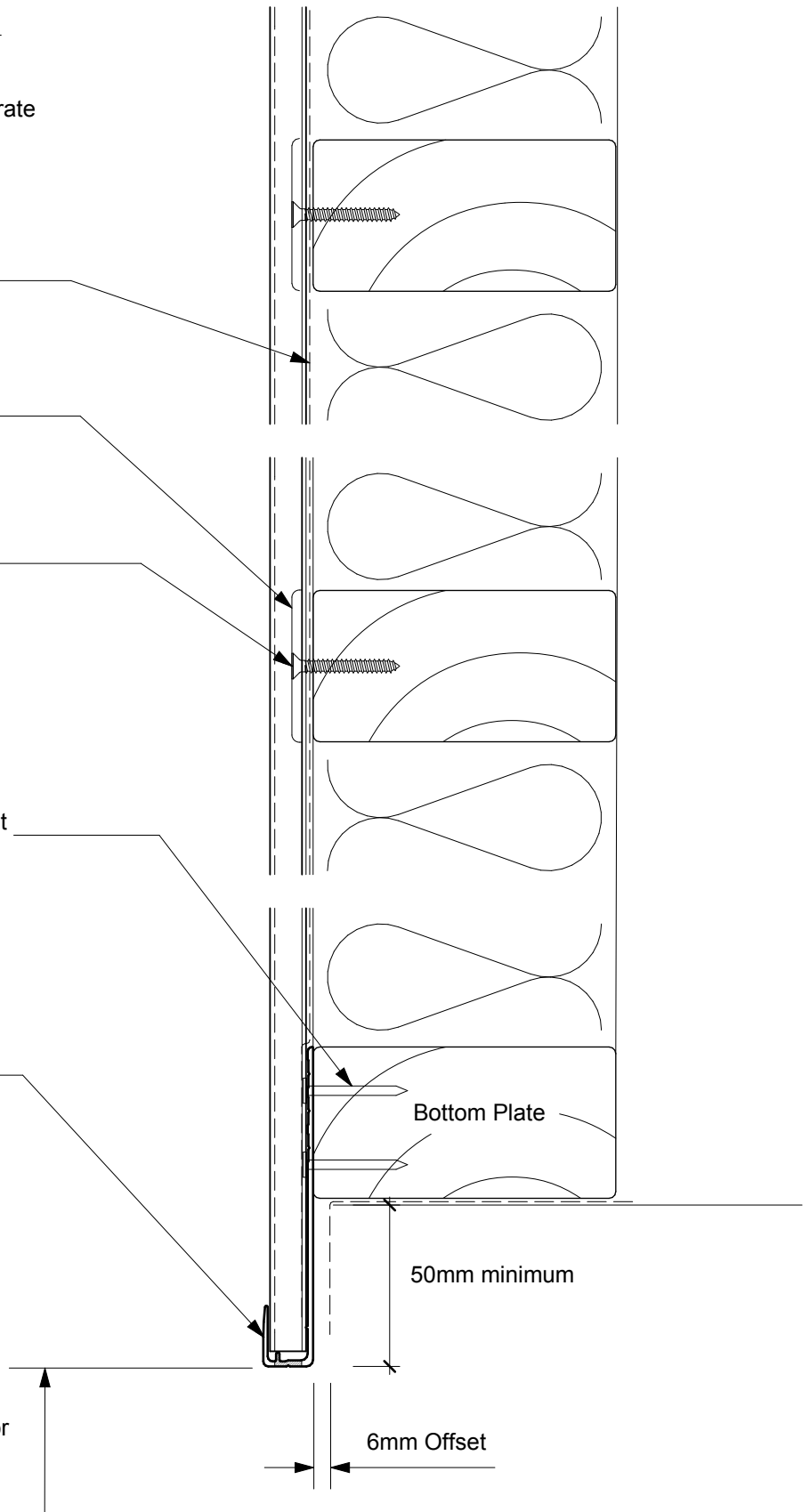
8g x 32 s/s csk screw

2.5mm x 30 Hot Dip Galv. Clout
staggered @ 300mm centers

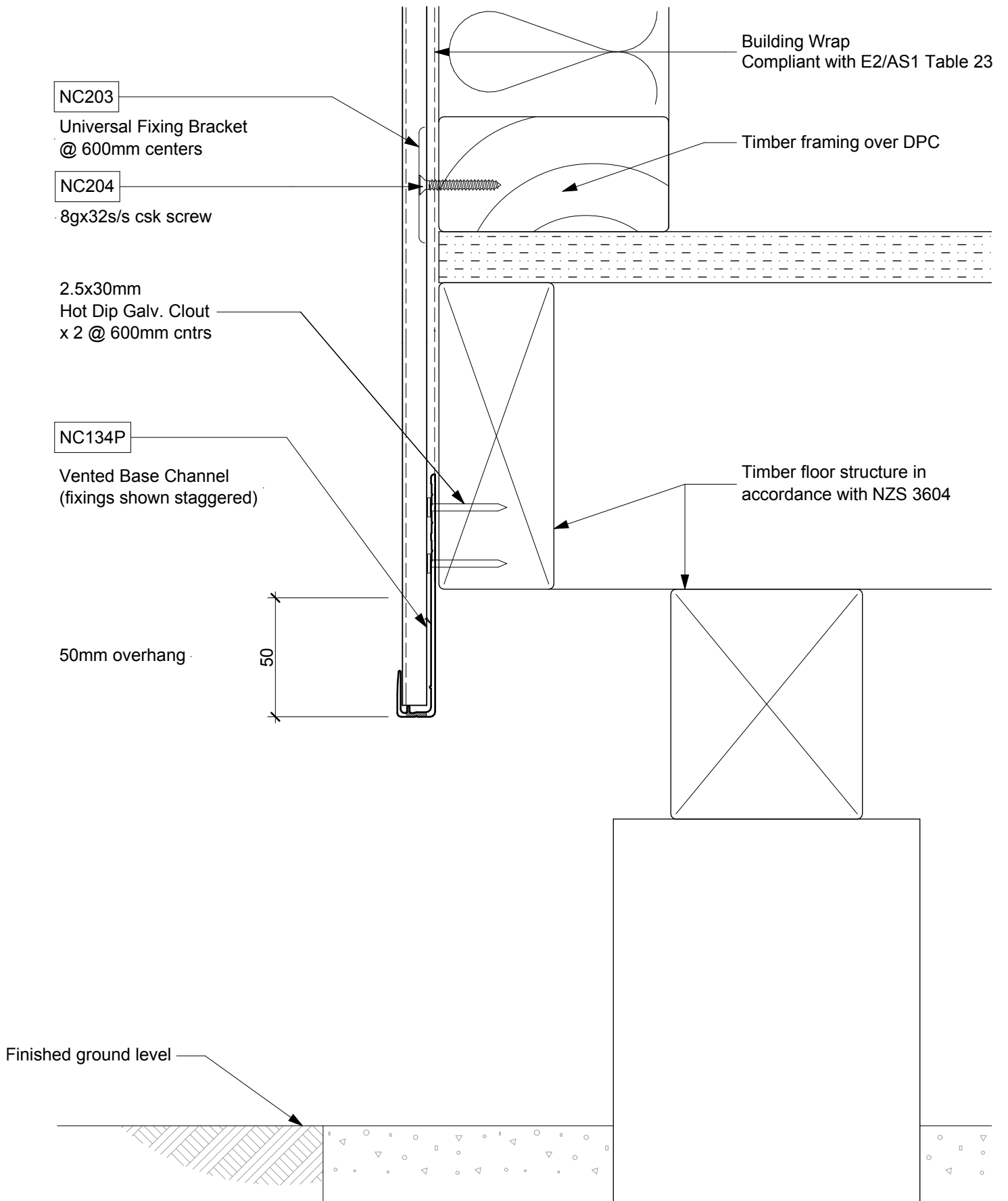
NC134P

Vented base channel (fixings
shown staggered).

100mm to permanent paving or
175mm to unfinished ground



NW-V001 - Vertical Cladding ; Direct Fix - Base Channel & Fixing
Scale 1:2



NW-V002 - Vertical Cladding ; Direct Fix - Timber Floor
Scale NTS

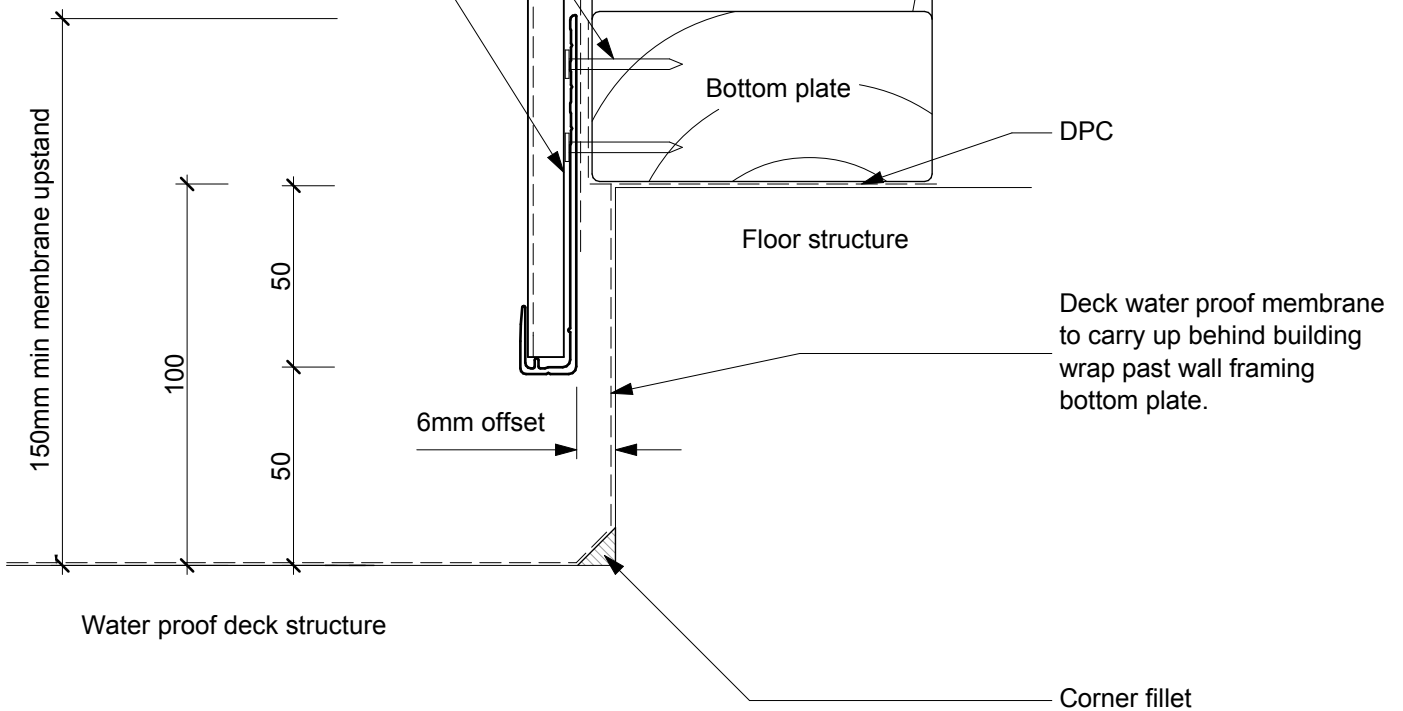
Building wrap over membrane
Compliant with E2/AS1 Table 23

NC204
8gx32 s/s csk screw

NC203
Universal Fixing Bracket
@ 600mm centers

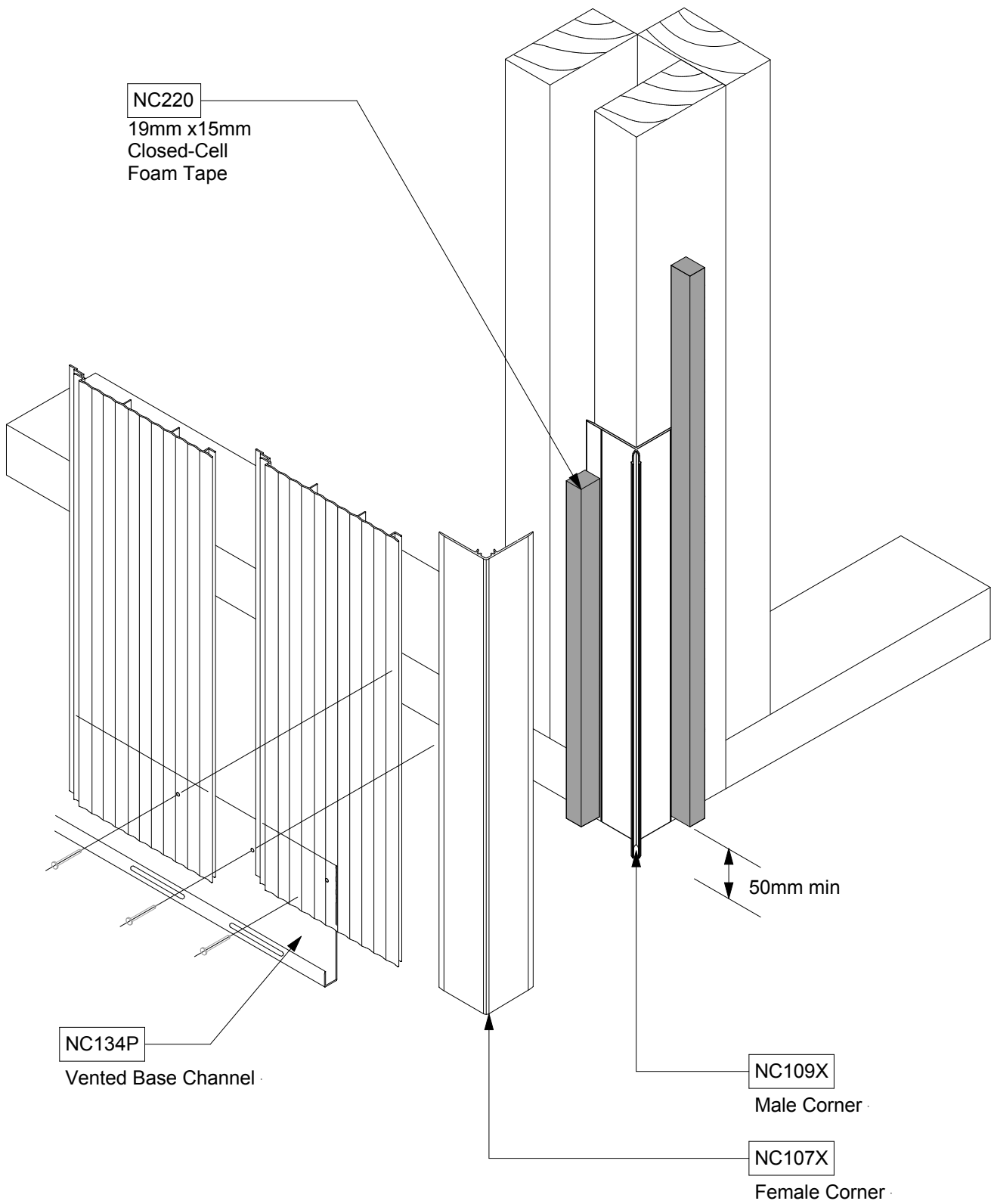
2.5x30mm
Hot Dip Galv. Clout
x 2 @ 600mm centers

NC134P
Vented Base Channel
(fixings shown staggered)



NW-V003 - Vertical Cladding ; Direct Fix - Waterproof Deck
Scale NTS

© NuWall Aluminium Cladding
www.nu-wall.co.nz
www.nu-wall.com.au



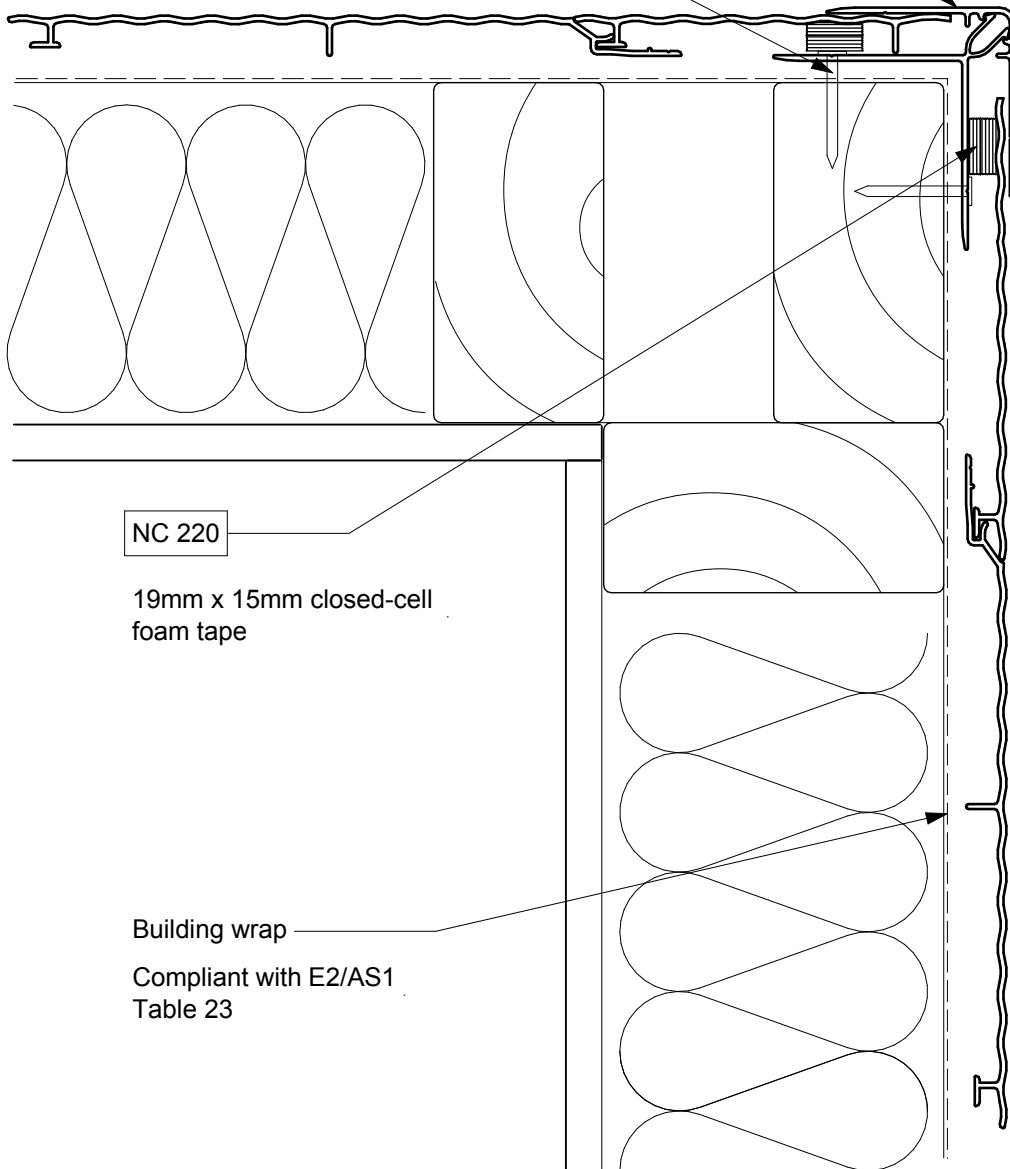
NW-V004 - Vertical Cladding ; Direct Fix - Base Channel & Corner Isometric
Scale NTS

© NuWall Aluminium Cladding
www.nu-wall.co.nz
www.nu-wall.com.au

NC107X / NC109X

Female/Male Corner
extends min. 50mm below bottom plate

2.5x30mm
Hot Dip Galv. Clout
Staggered @ 600mm centers



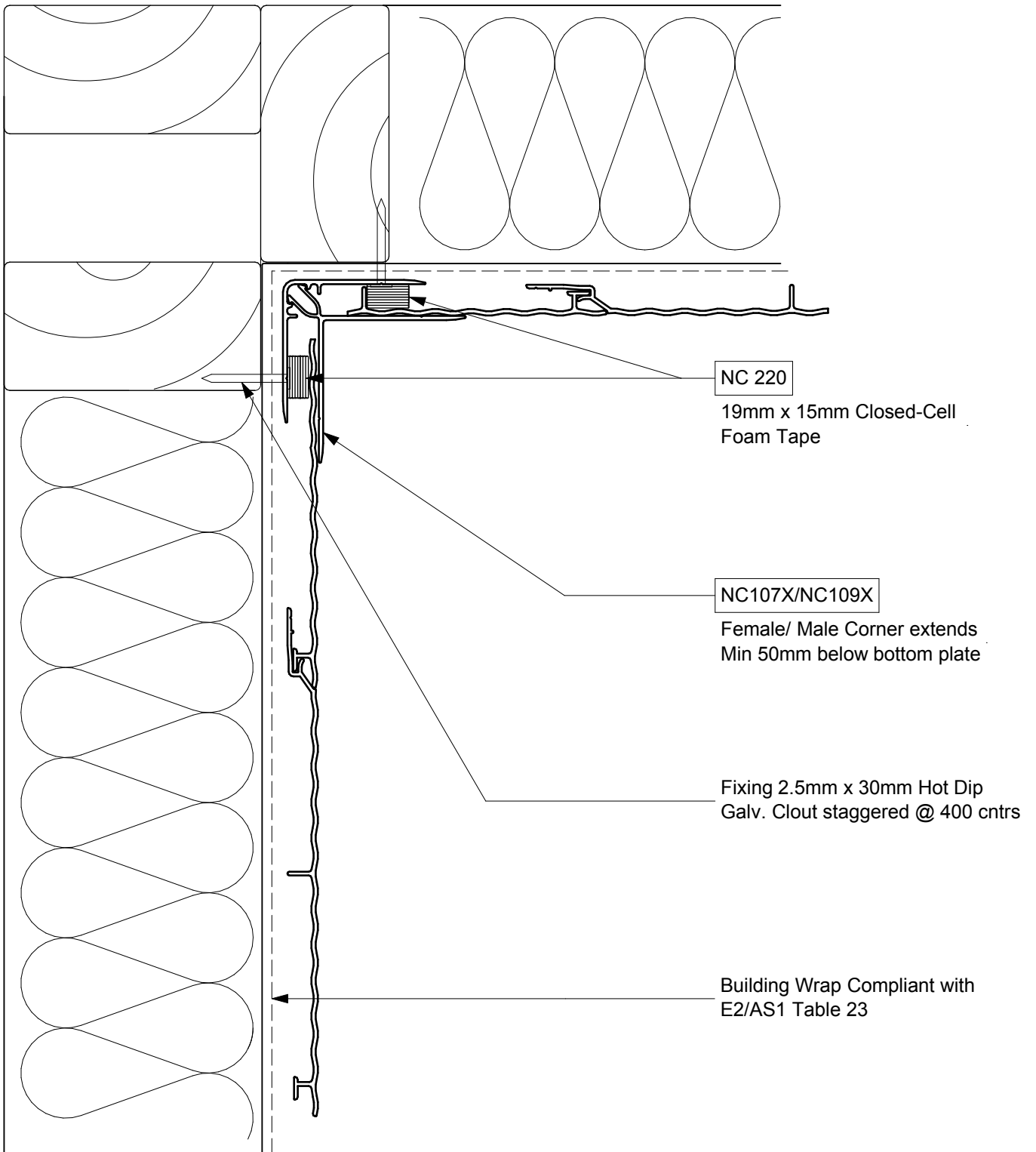
NC 220

19mm x 15mm closed-cell
foam tape

Building wrap
Compliant with E2/AS1
Table 23

NW-V005 - Vertical Cladding ; Direct Fix - External 90° Corner
Scale 1:2

© NuWall Aluminium Cladding
www.nu-wall.co.nz
www.nu-wall.com.au

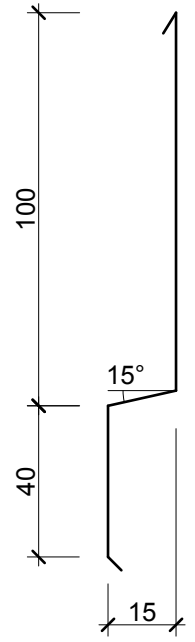
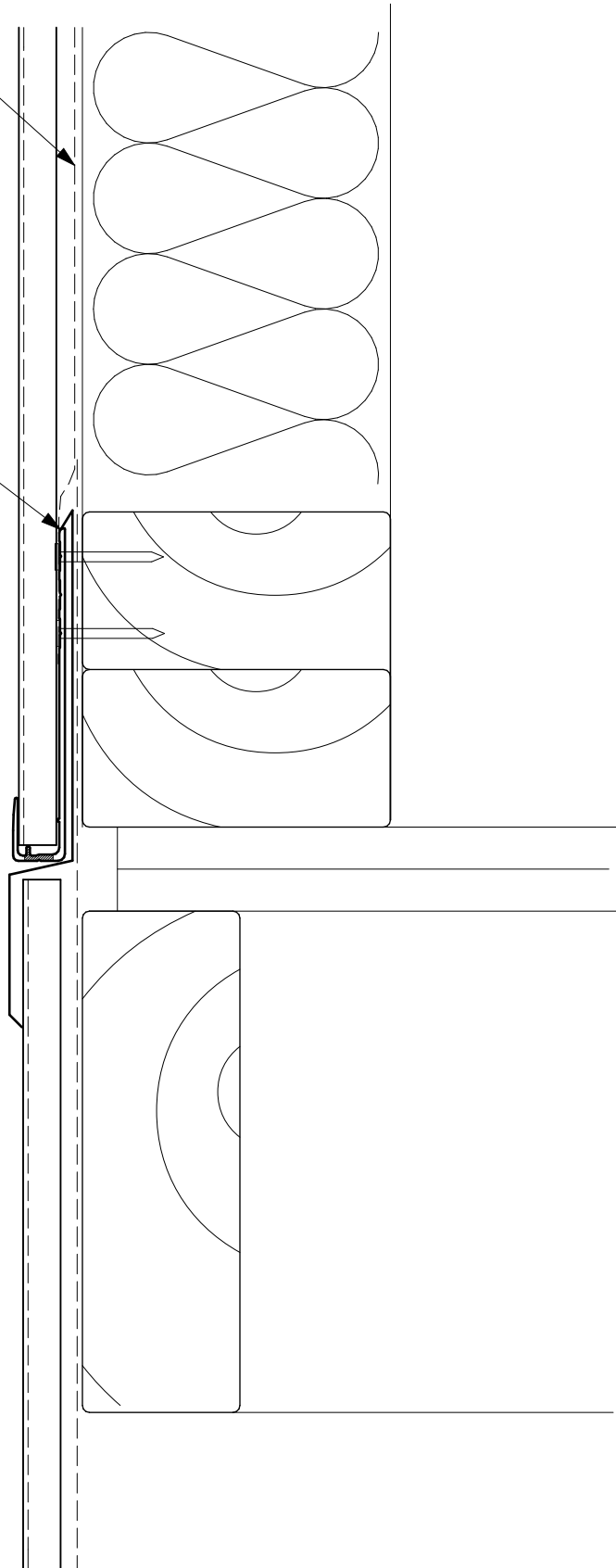


NW-V006 - Vertical Cladding ; Direct Fix - Internal 90° Corner
Scale 1:2

© NuWall Aluminium Cladding
www.nu-wall.co.nz
www.nu-wall.com.au

Building wrap
Compliant with
E2/AS1 Table 23

NC134P
Vented Base Channel
(fixings shown staggered)



Flashing
Dimensions

NW-V007 - Vertical Cladding ; Direct Fix - Horizontal Joint
Scale 1:2

© NuWall Aluminium Cladding
www.nu-wall.co.nz
www.nu-wall.com.au

Sill Tray Fixings at either end through Sill Flashing upstand. Add Silicone sealant between Sill Flashing upstand and Jamb Flashing to complete end dams

Packers

Flexible flashing tape along entire sill, 100mm up each jamb and 50mm onto face of building wrap

Air seal over PEF backing rod

10mm cover

7.5

5mm

NC119

Sill Flashing, with 20mm upstand at each end

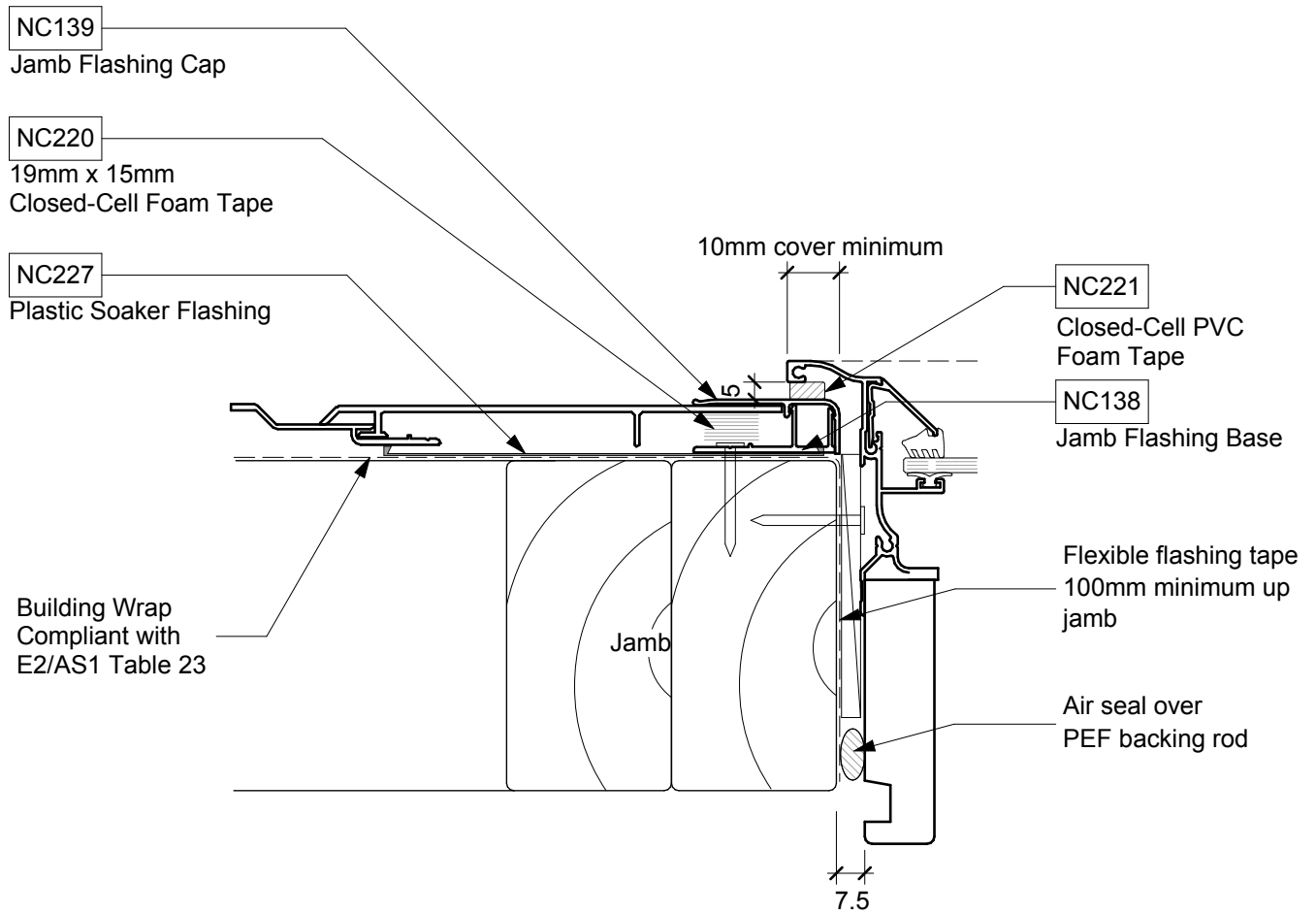
NC227

Plastic Soaker Flashing is behind Jamb Flashing Base and extends to the Base Channel, or into a Horizontal Joint. Refer dwg NW-V011.

Building Wrap Compliant with E2/AS1 Table 23

NW-V008 - Vertical Cladding ; Direct Fix - Window Sill
Scale 1:2

© NuWall Aluminium Cladding
www.nu-wall.co.nz
www.nu-wall.com.au



NW-V009 - Vertical Cladding ; Direct Fix - Window Jamb
 Scale 1:2

© NuWall Aluminium Cladding
www.nu-wall.co.nz
www.nu-wall.com.au

NC134P

Vented Base Channel

Joinery head flashing with 15° slope & 20mm stopend (Extends 50mm each side of window opening)
Ref NW-V012 for head flashing detailing

Flashing tape or second layer of building wrap over flashing upstand

Fixing 2.5mm x 30mm Hot Dip Galv. Clout staggered @ 400 cntrs

Head flashing upstand with 35mm minimum cover to cladding

5mm gap
10mm cover

7.5mm

NC227

Plastic Soaker Flashing continued to finish into vented Base Channel or horizontal joint.
Ref NW-V011

Building Wrap folded into opening.
Compliant with E2/AS1 Table 23

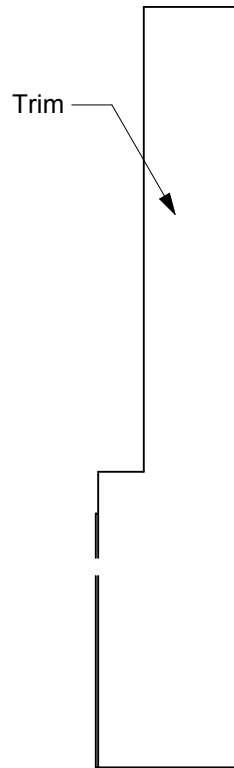
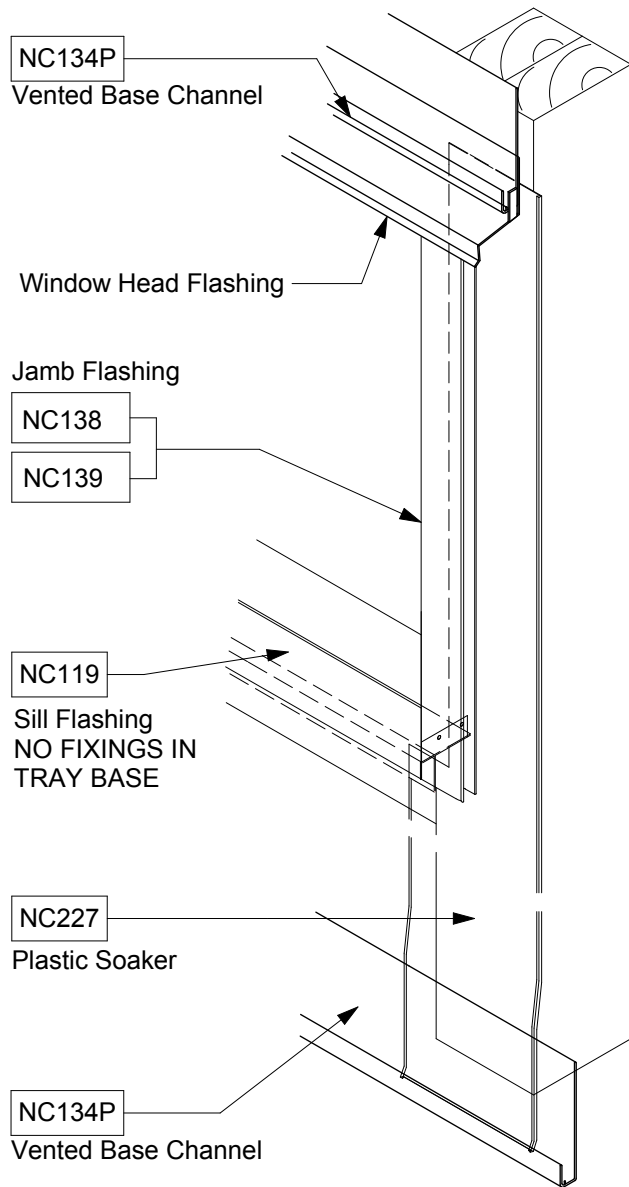
Air seal over PEF backing rod

Packers

Flexible flashing tape at corners

NW-V010 - Vertical Cladding ; Direct Fix - Window Head
Scale 1:2

© NuWall Aluminium Cladding
www.nu-wall.co.nz
www.nu-wall.com.au



Cut Soakers to length
Trim to suit
Form into Base Channel
at bottom of cladding

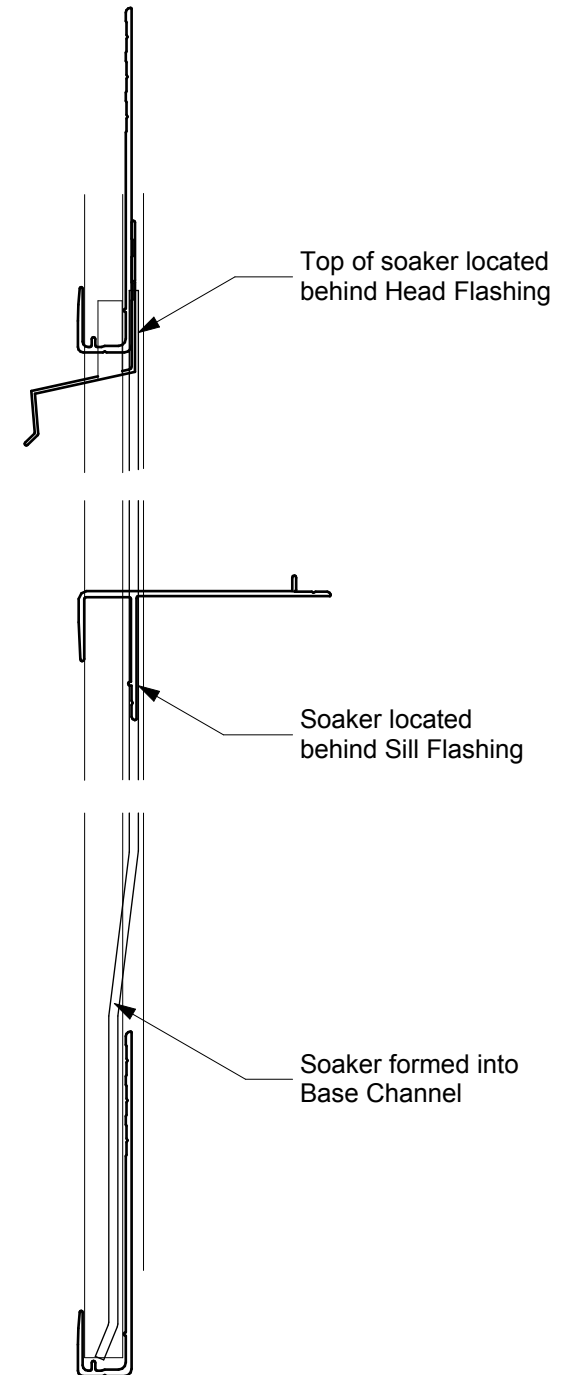
HEAD

SILL

BASE

TO ENSURE CONTROL OF FAILURE WATER:

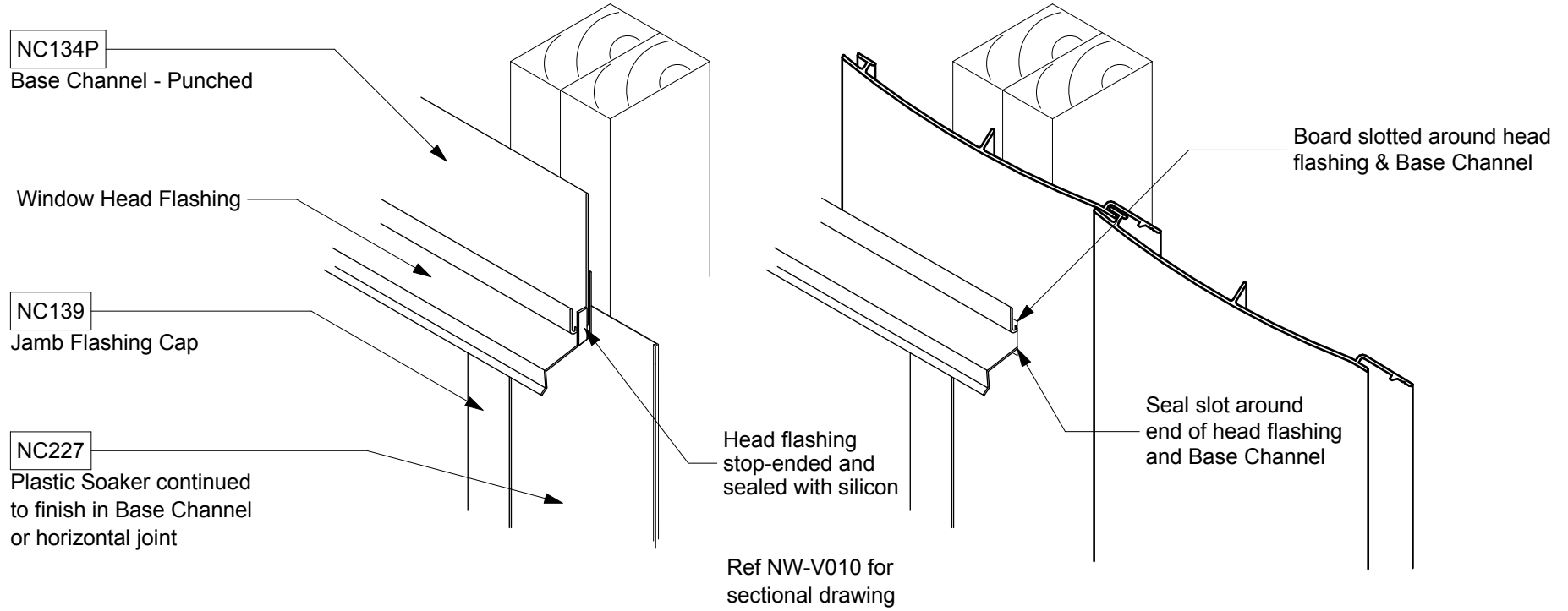
1. Before fitting the first board around the window. Fit Sill Flashing.
2. Slip Plastic Soaker Flashing up behind Jamb Flashing.
3. Silicone Seal between the Sill upstand and the Jamb Flashing.
4. Fit Jamb Flashing Base.
5. Continue Plastic Soaker Flashing to finish into the Vented Base Channel or horizontal joint.



NW-V011 - Vertical Cladding ; Direct Fix - Window Head, Jamb & Sill Soaker Detail
Scale NTS

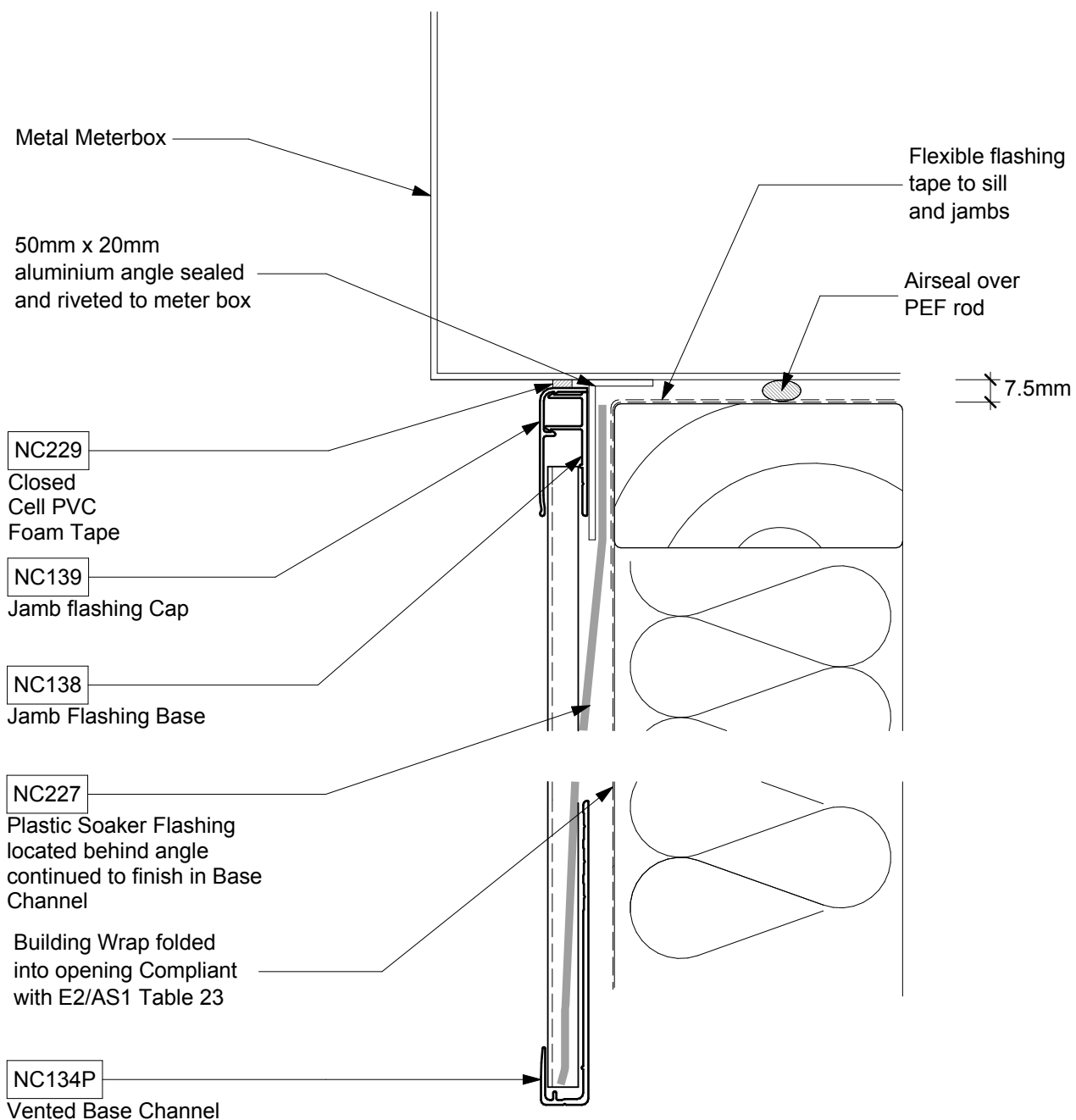
Junction prior to cladding around window head

Junction after cladding around window head



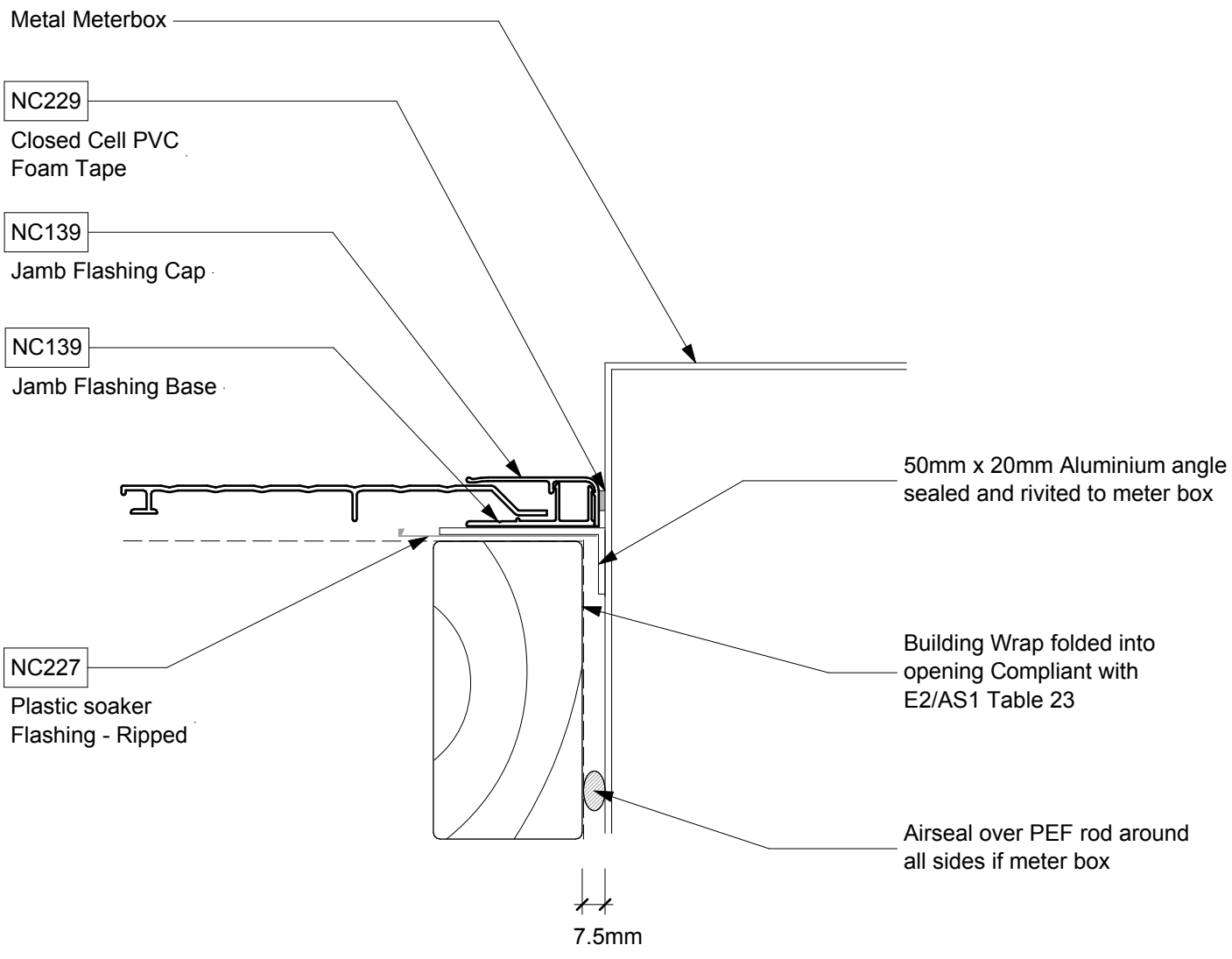
NW-V012 - Vertical Cladding ; Direct Fix - Head Flashing End Detail
Scale NTS

© NuWall Aluminium Cladding
www.nu-wall.co.nz
www.nu-wall.com.au



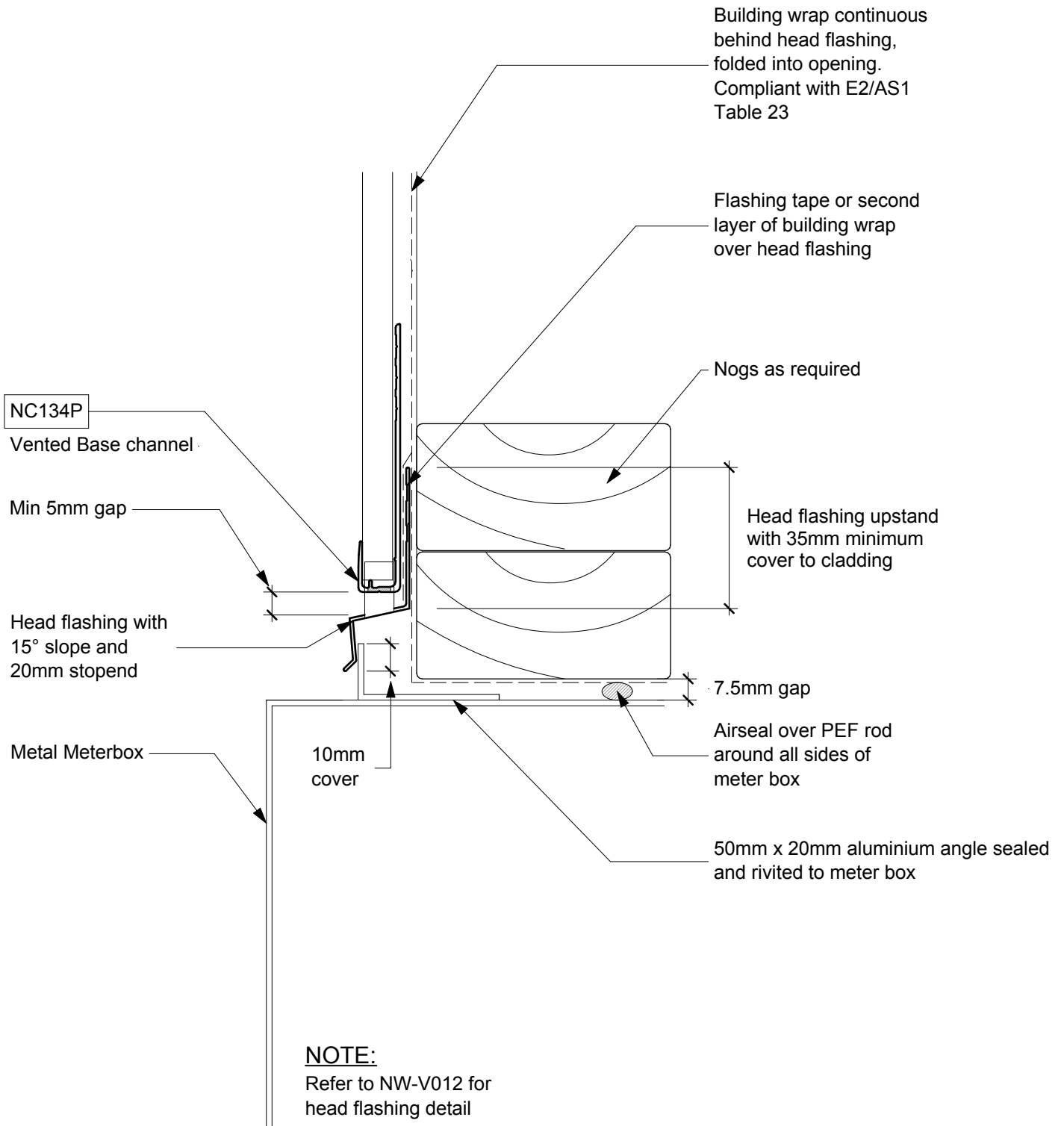
NW-V013 - Vertical Cladding ; Direct Fix - Meter Box Sill Detail
Scale NTS

© NuWall Aluminium Cladding
www.nu-wall.co.nz
www.nu-wall.com.au



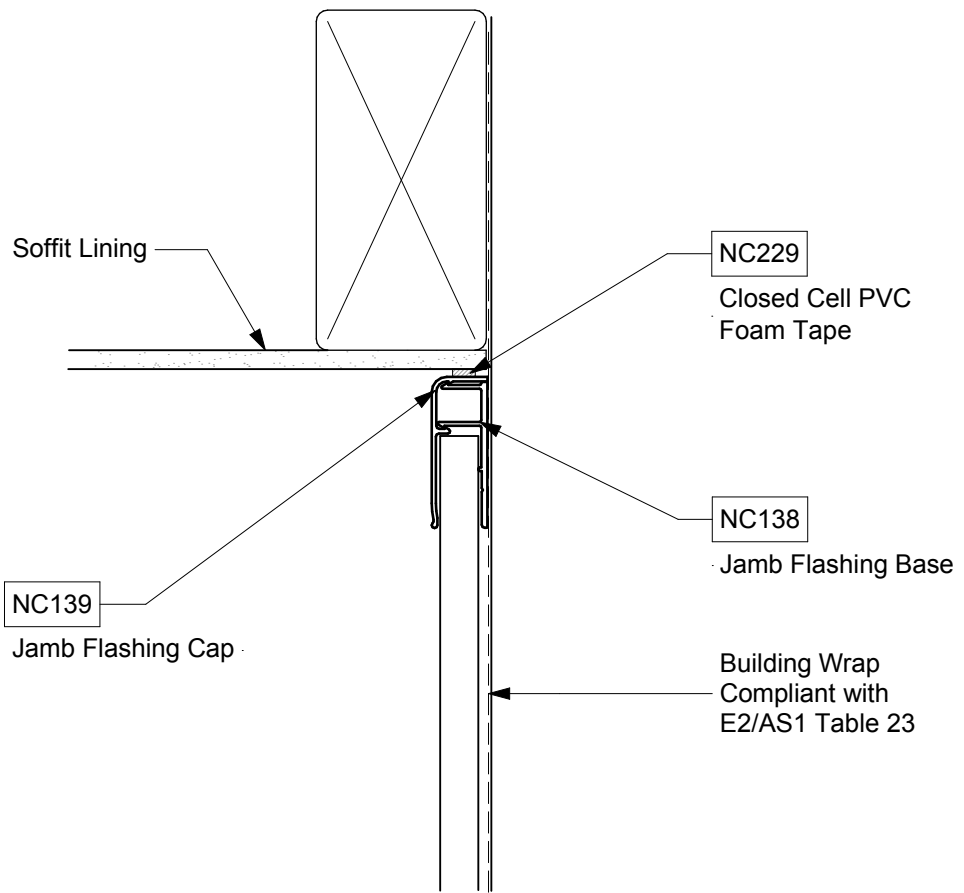
NW-V014 - Vertical Cladding ; Direct Fix - Meter Box Jamb Detail
Scale NTS

© NuWall Aluminium Cladding
www.nu-wall.co.nz
www.nu-wall.com.au



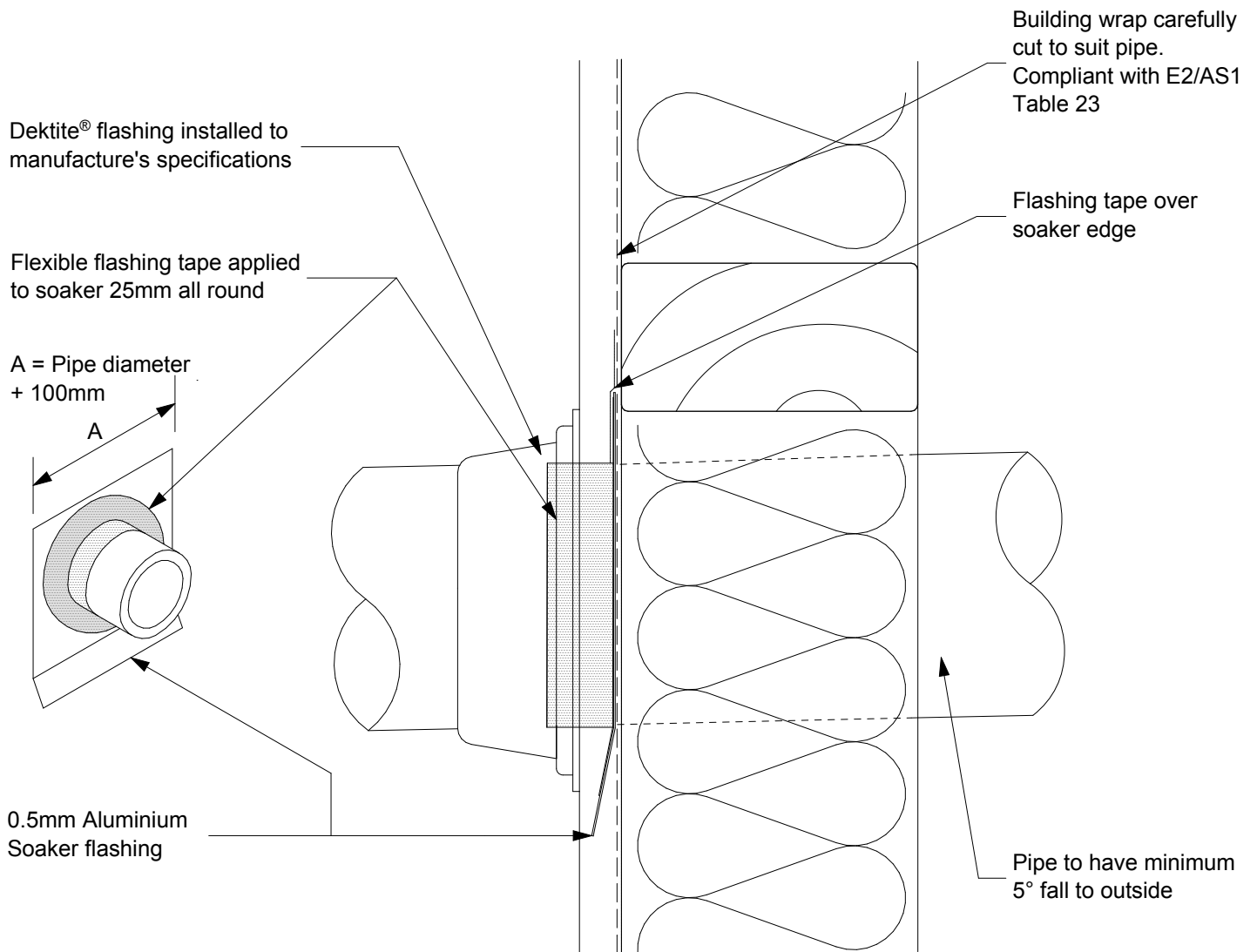
NW-V015 - Vertical Cladding ; Direct Fix - Meter Box Head Detail
Scale NTS

© NuWall Aluminium Cladding
www.nu-wall.co.nz
www.nu-wall.com.au



NW-V016 - Vertical Cladding ; Direct Fix - Soffit Trim
Scale NTS

© NuWall Aluminium Cladding
www.nu-wall.co.nz
www.nu-wall.com.au



NW-V017 - Vertical Cladding ; Direct Fix - Pipe Penetration
Scale NTS

© NuWall Aluminium Cladding
www.nu-wall.co.nz
www.nu-wall.com.au

August 07

Building wrap lapped over flashing upstand.
Compliant with E2/AS1
Table 23

75mm min flashing
leg above bottom of
weatherboard

Nog as required

Roof underlay
continued up behind
flashing

Selected roofing
with stop end

NC134P
Vented Base Channel

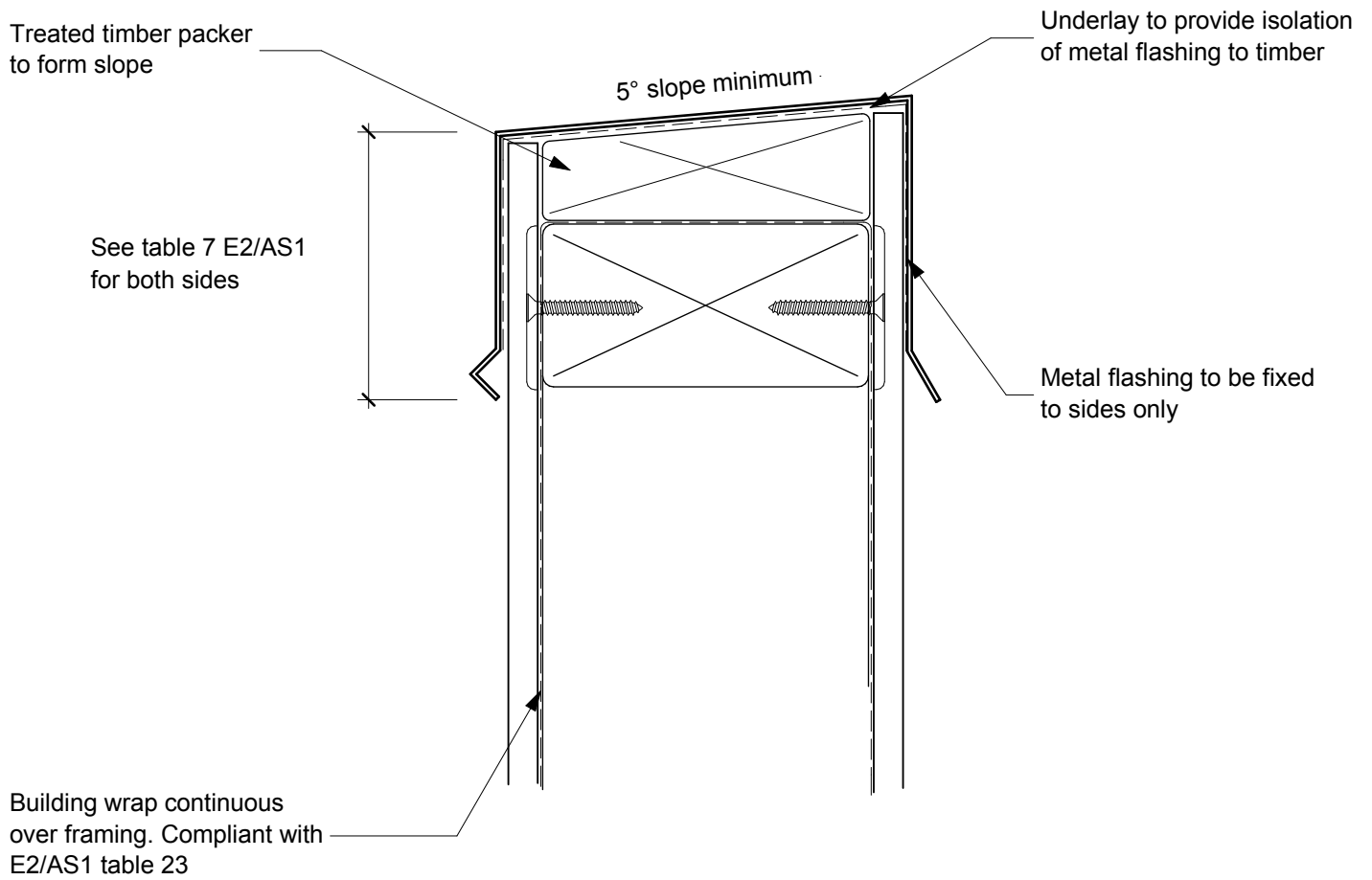
35mm minimum clear gap

Edge of flashing dressed down
or notched.
Refer to NZBC Acceptable
Solution E2/AS1 table 7 for
flashing cover requirements
over roof

NW-V018 - Vertical Cladding ; Direct Fix - Roof / Wall Junction
Scale NTS

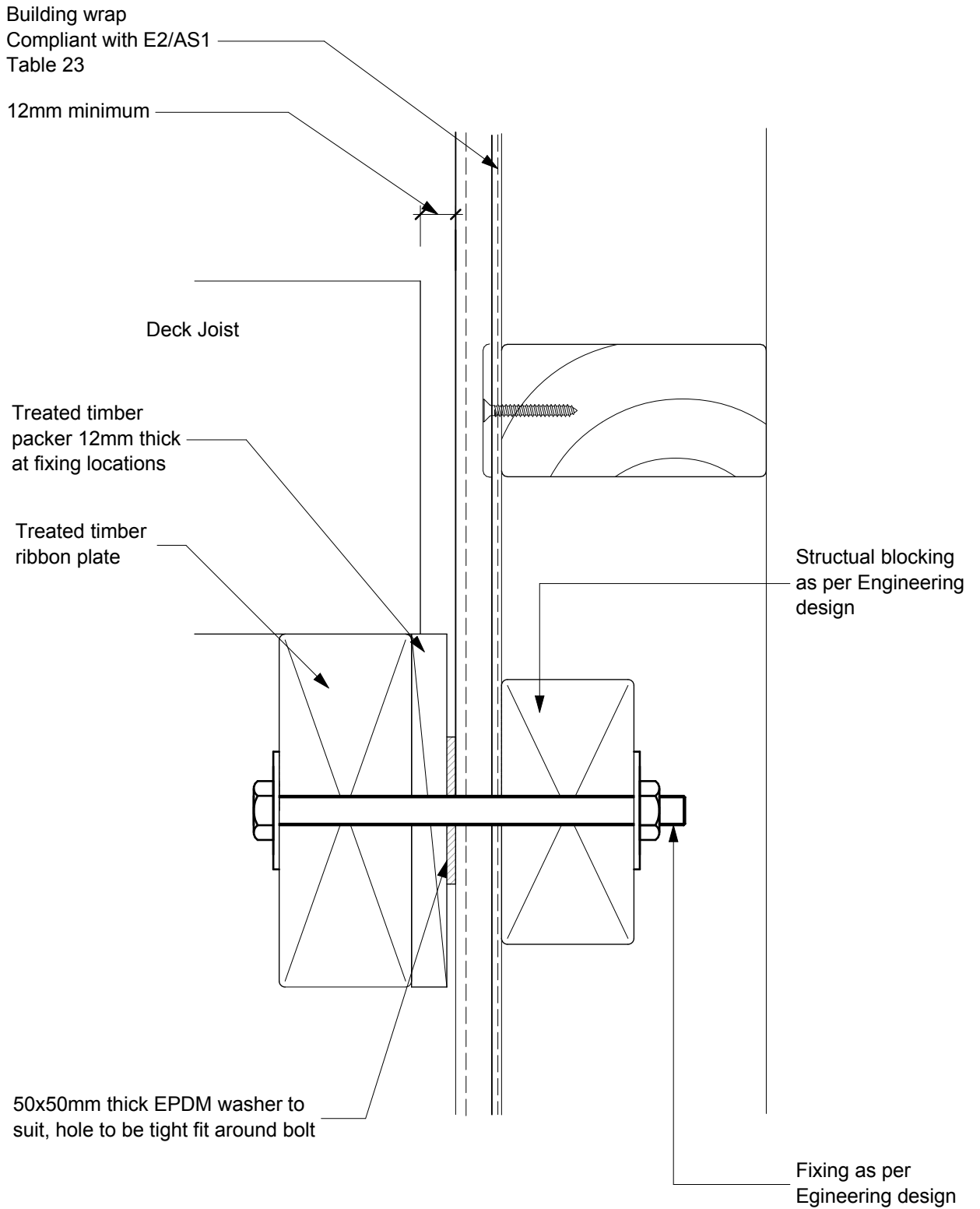
© NuWall Aluminium Cladding
www.nu-wall.co.nz
www.nu-wall.com.au

August 07



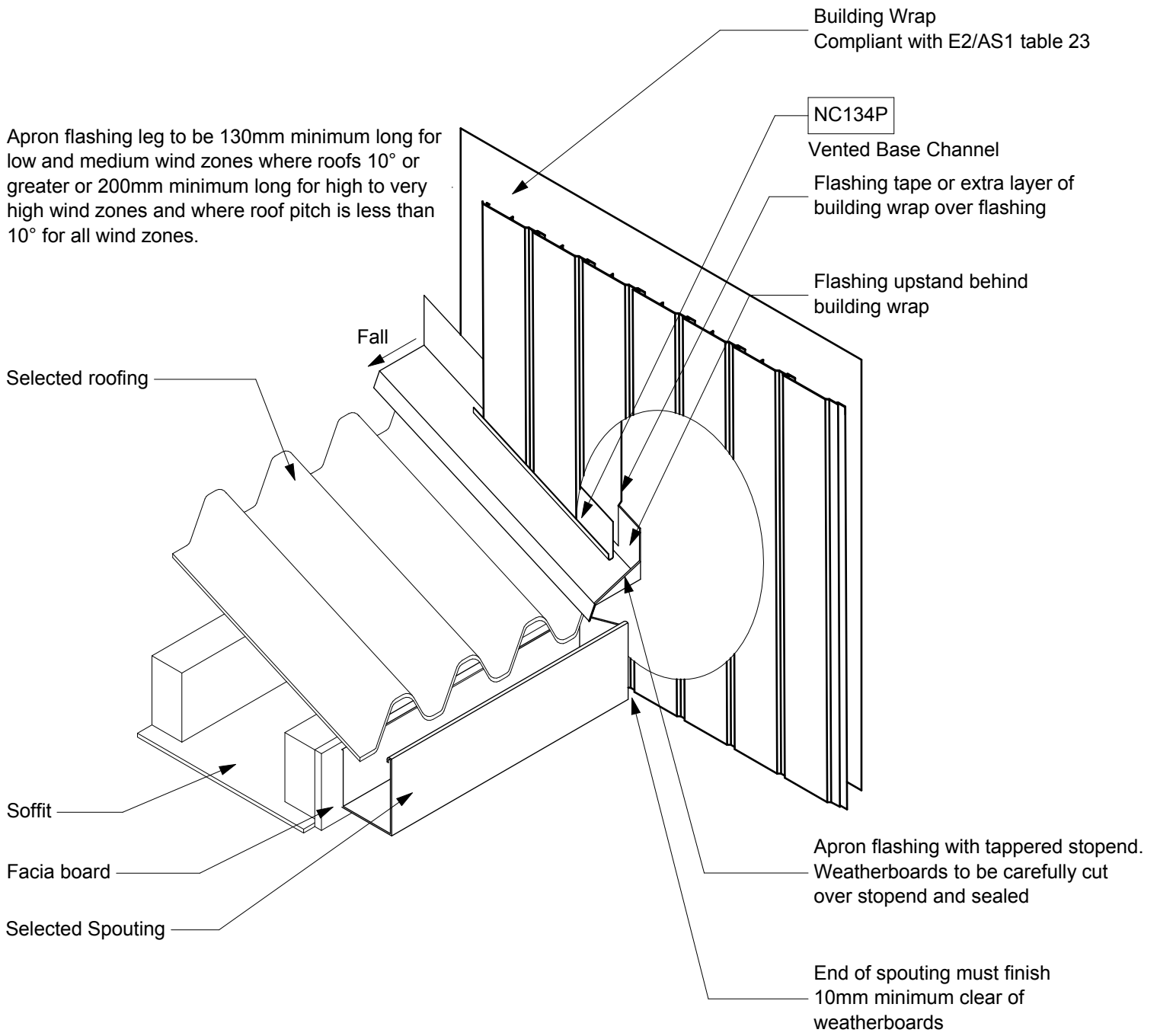
NW-V019 - Vertical Cladding Direct Fix - Parapet Flashing
Scale NTS

© NuWall Aluminium Cladding
www.nu-wall.co.nz
www.nu-wall.com.au



NW-V020 - Vertical Cladding ; Direct Fix - Deck Junction
Scale NTS

© NuWall Aluminium Cladding
www.nu-wall.co.nz
www.nu-wall.com.au



NW-V021 - Vertical Cladding ; Direct Fix - Gutter / Wall Junction

Scale 1:15

© NuWall Aluminium Cladding
www.nu-wall.co.nz
www.nu-wall.com.au