

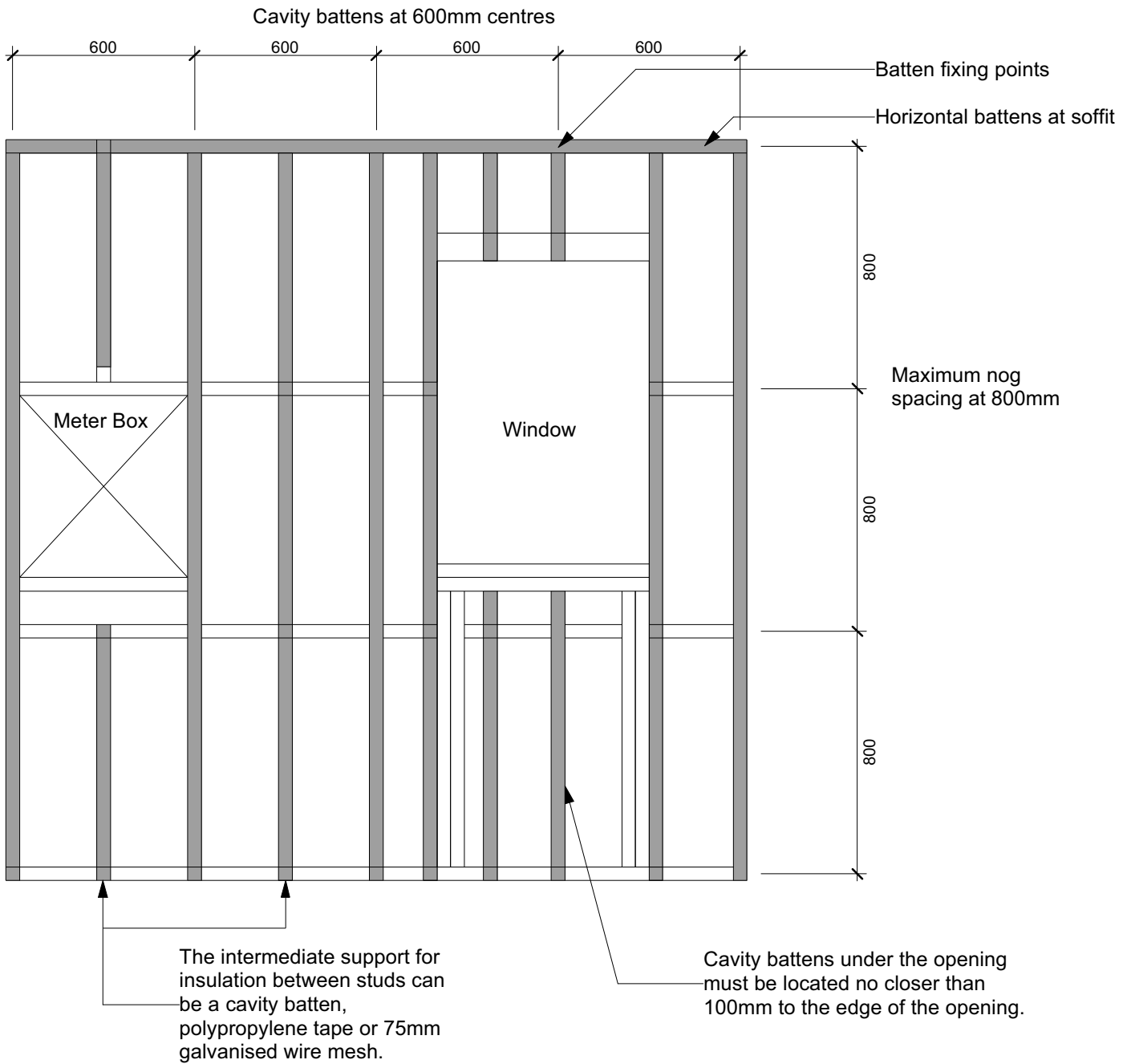


NU-WALL EXTRUDED ALUMINIUM CLADDING

Installation Specifications – Horizontal orientation (over cavity)

- 1. NW-H001C; Cavity batten layout**
- 2. NW-H002C; Battening options**
- 3. NW-H003C; Starter strip & fixing detail**
- 4. NW-H004C; Starter strip over timber floor**
- 5. NW-H005C; Starter strip over waterproof deck**
- 6. NW-H006C; Starter strip / external 90° corner isometric**
- 7. NW-H007C; External 90° corner**
- 8. NW-H008C; Internal 90° corner**
- 9. NW-H009C; Vertical joint**
- 10. NW-H010C; Window sill section**
- 11. NW-H011C; Window jamb section**
- 12. NW-H012C; Window head section (coinciding with full board)**
- 13. NW-H013C; Window head section (notched board)**
- 14. NW-H014C; Window head & sill soaker flashing detailing**
- 15. NW-H015C; Window head flashing end detail (full board)**
- 16. NW-H016C; Window head flashing end detail (notched board)**
- 17. NW-H017C; Meter box sill section**
- 18. NW-H018C; Meter box jamb section**
- 19. NW-H019C; Meter box head section**
- 20. NW-H020C; Inter-storey horizontal drainage joint**
- 21. NW-H021C; Soffit trim section**
- 22. NW-H022C; Pipe penetration**
- 23. NW-H023C; Roof / wall junction**
- 24. NW-H024C; Parapet flashing**
- 25. NW-H025C; Deck junction**
- 26. NW-H026C; Gutter / wall junction**

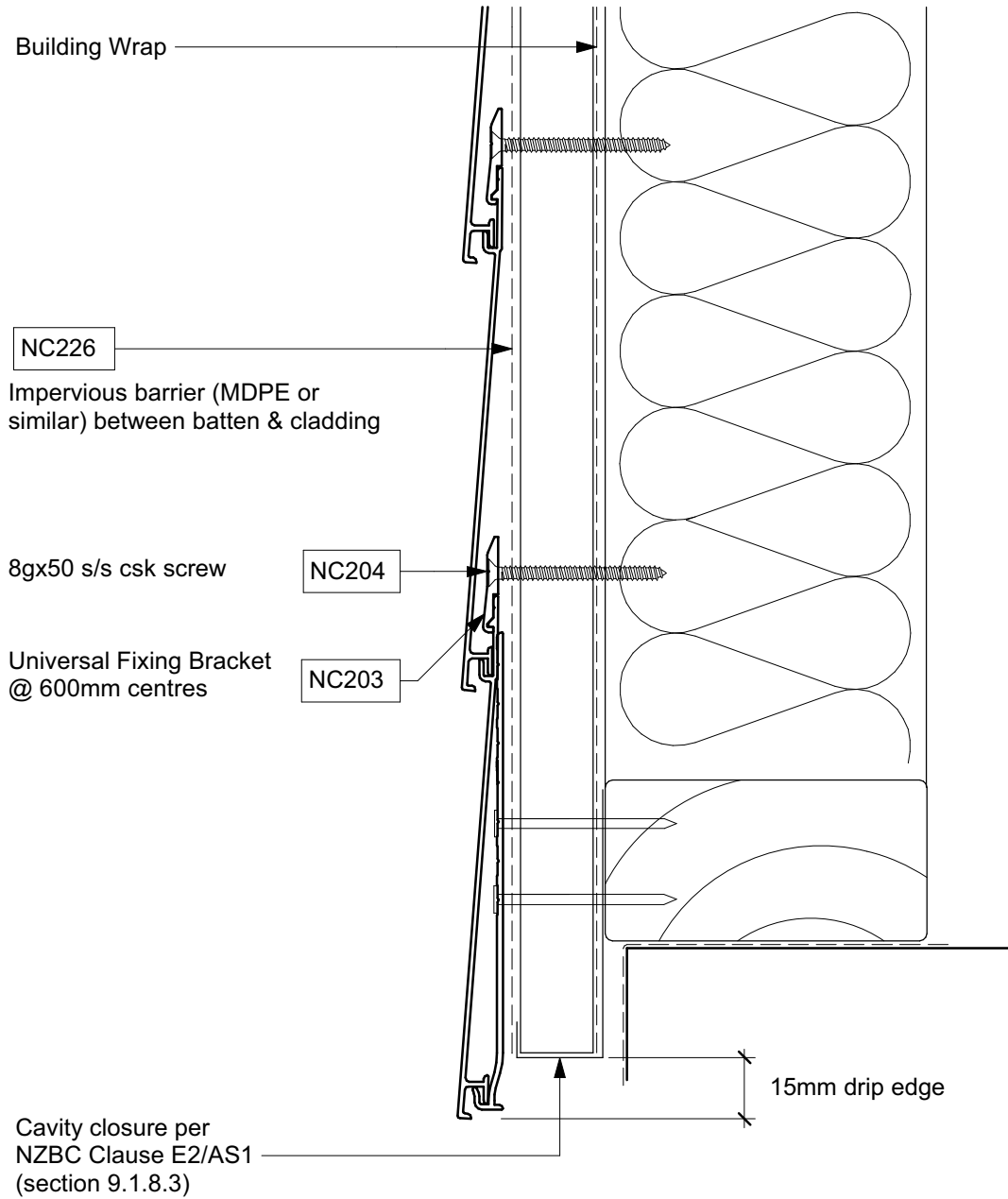




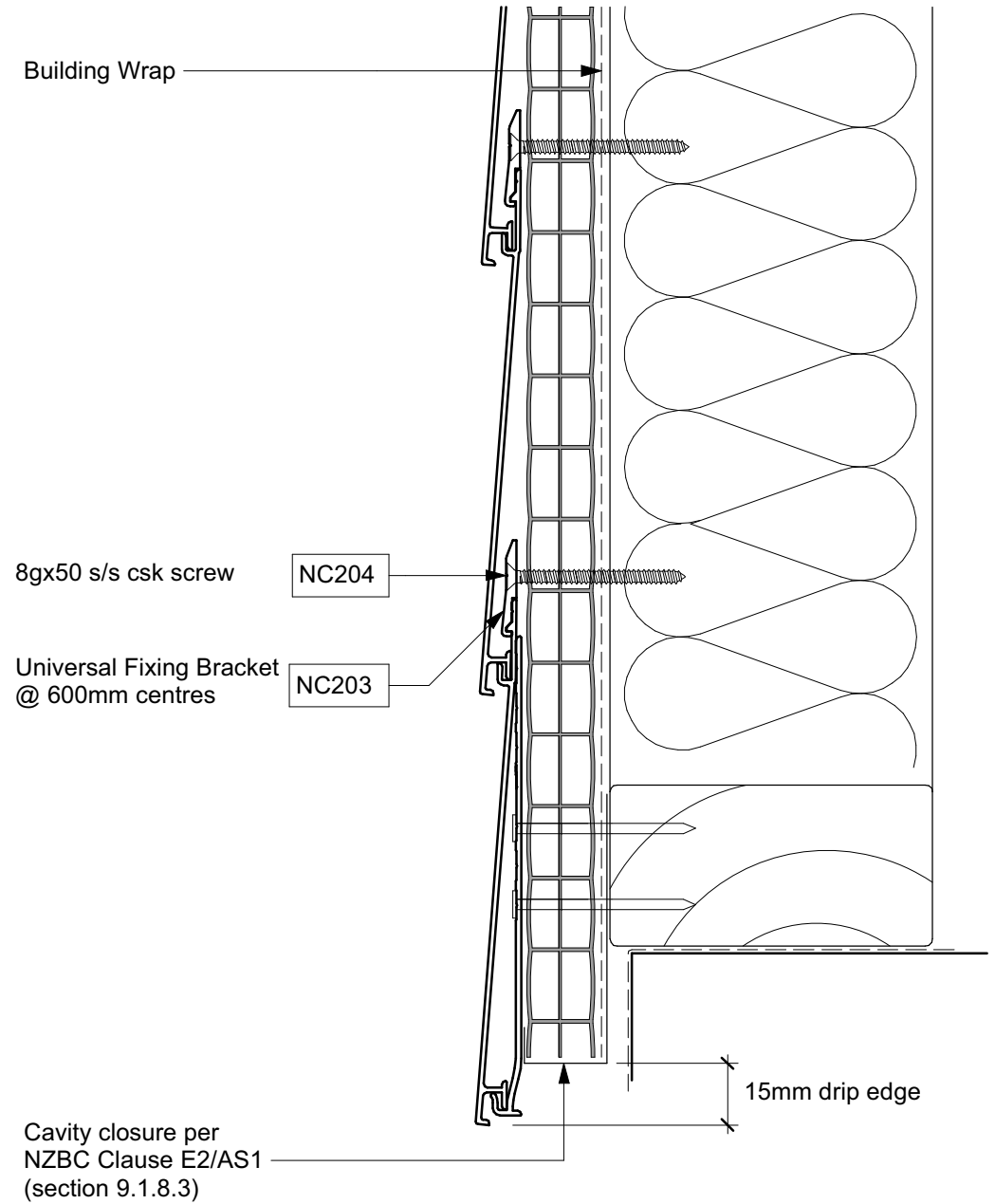
NW-H001C - Horizontal Cladding over Drained & Vented Cavity Batten Layout
 Scale: 1:20

© NuWall Aluminium Cladding
www.nu-wall.co.nz
www.nu-wall.com.au

① USING TREATED TIMBER BATTEN



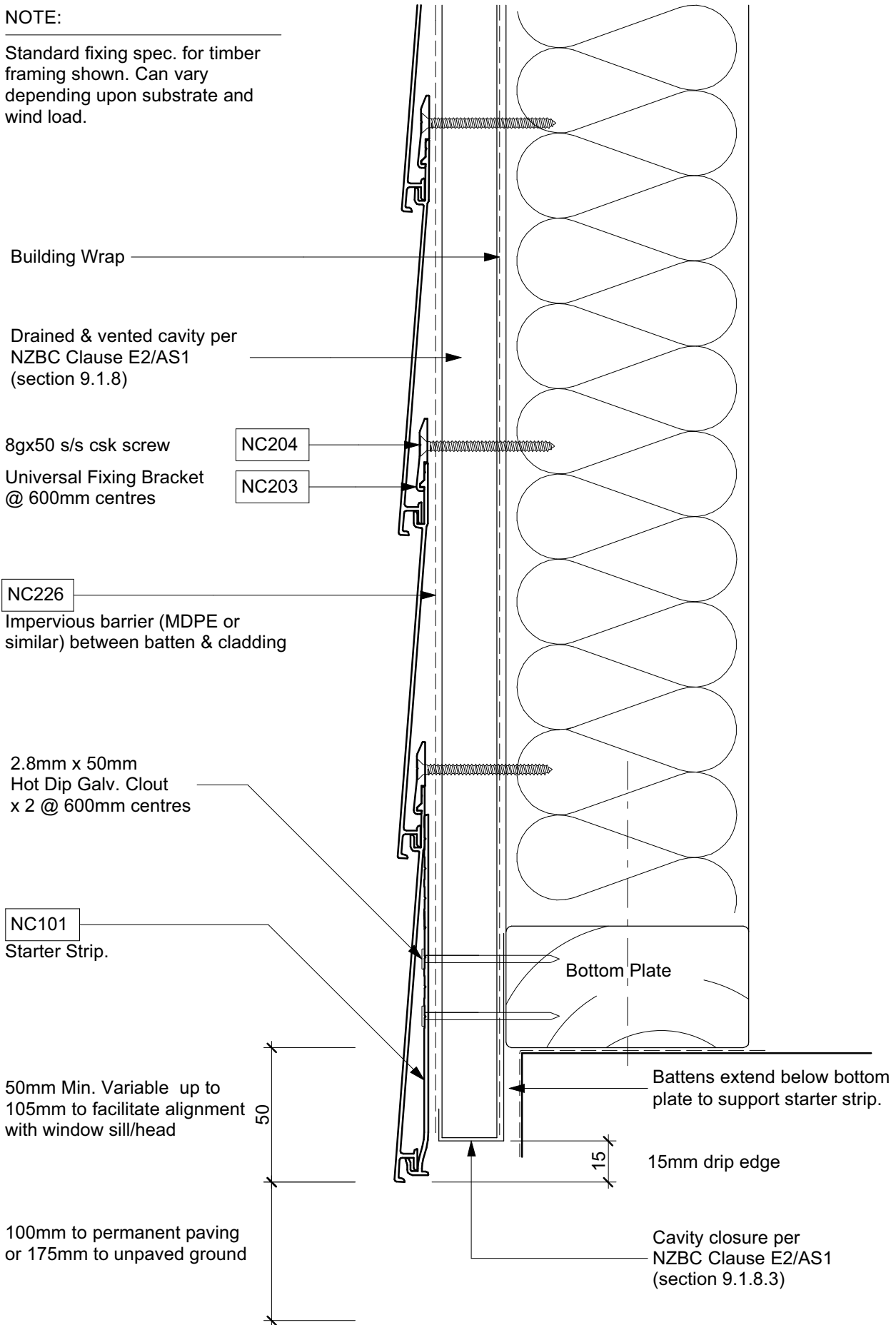
② USING CAVIBAT PLASTIC BATTEN



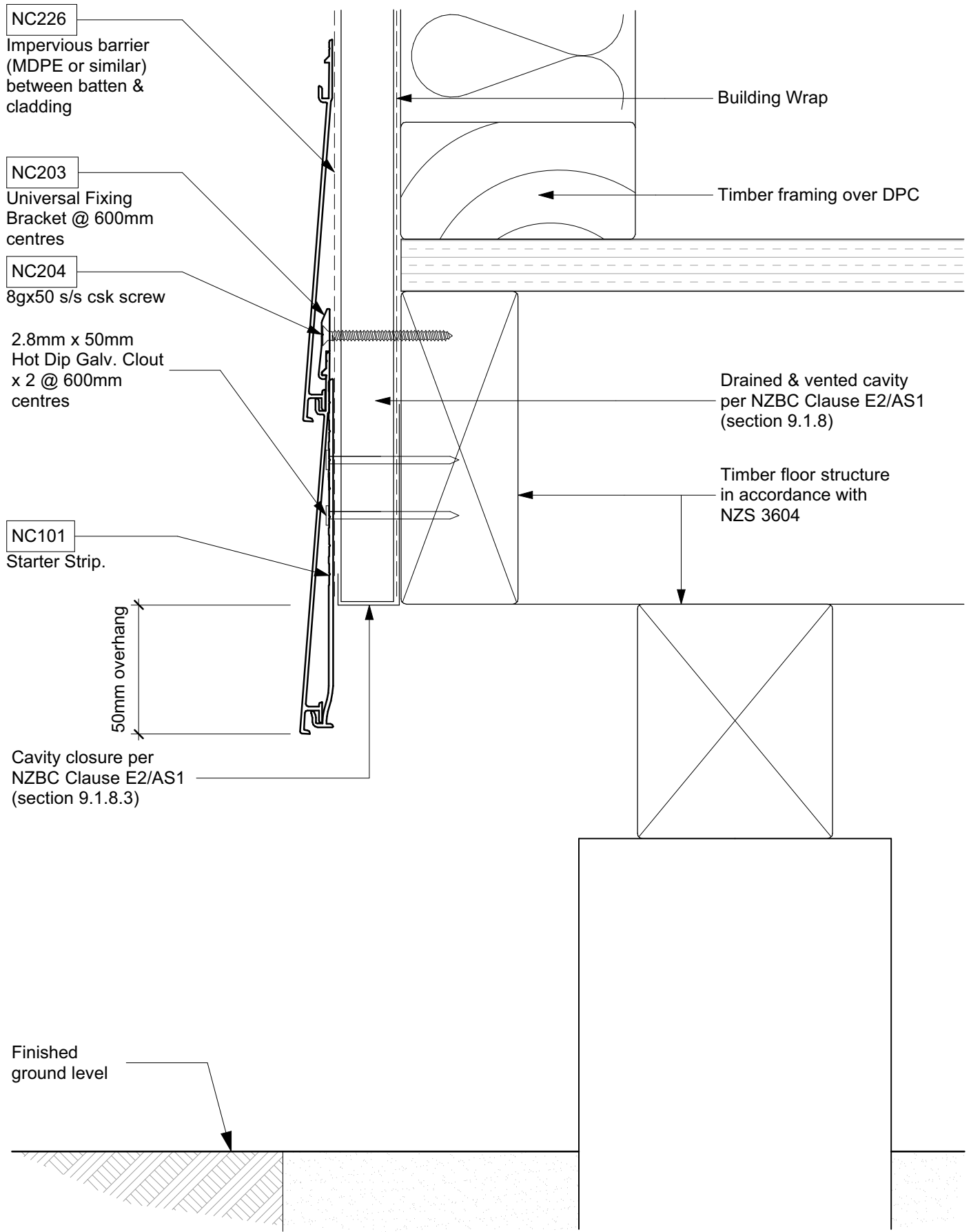
NW-H002C - Horizontal Cladding over Drained & Vented Cavity Battening Options
Scale: 1:2

NOTE:

Standard fixing spec. for timber framing shown. Can vary depending upon substrate and wind load.

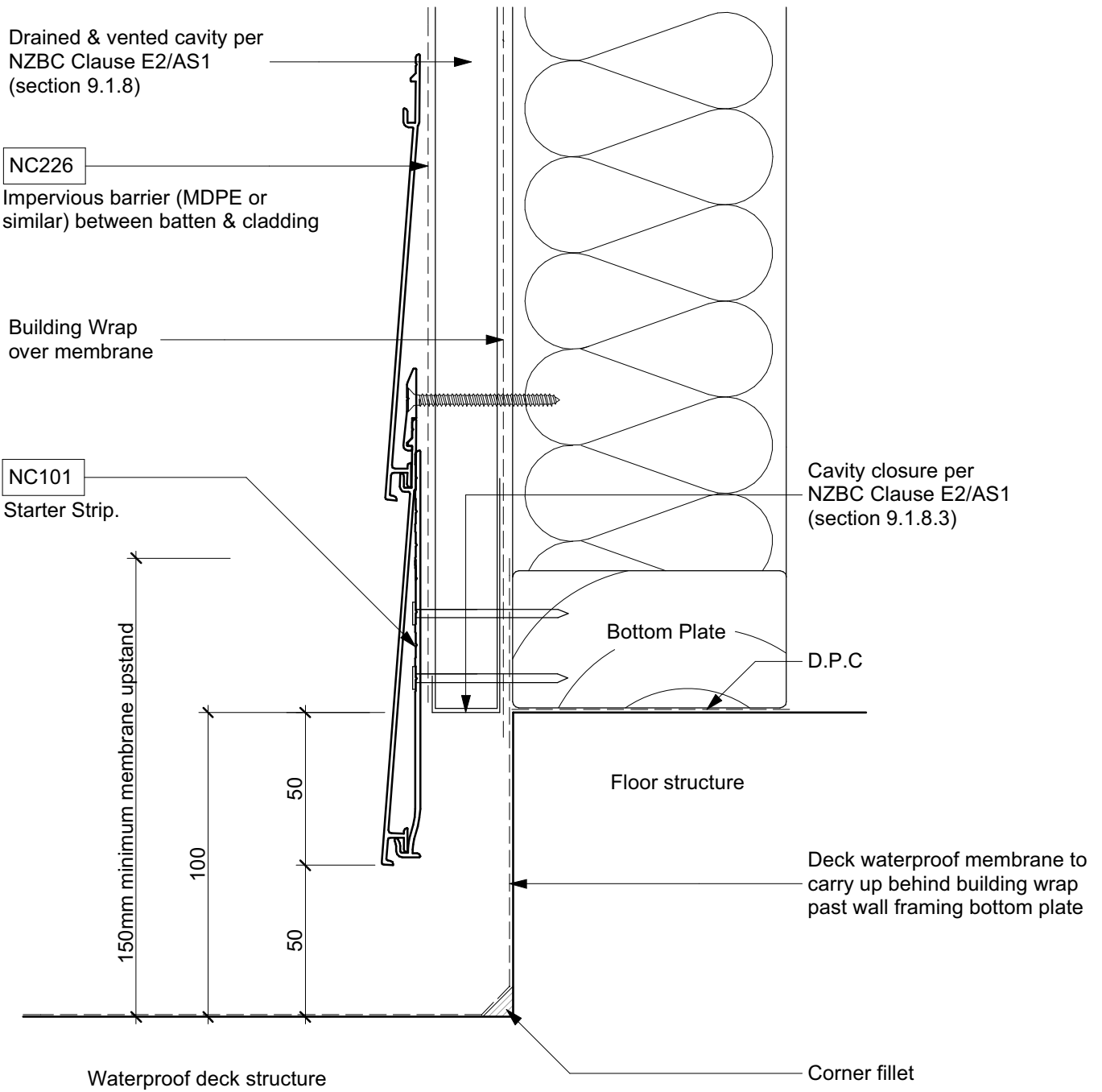


NW-H003C - Horizontal Cladding over Drained & Vented Cavity Starter Strip & Fixing
 Scale: 1:2



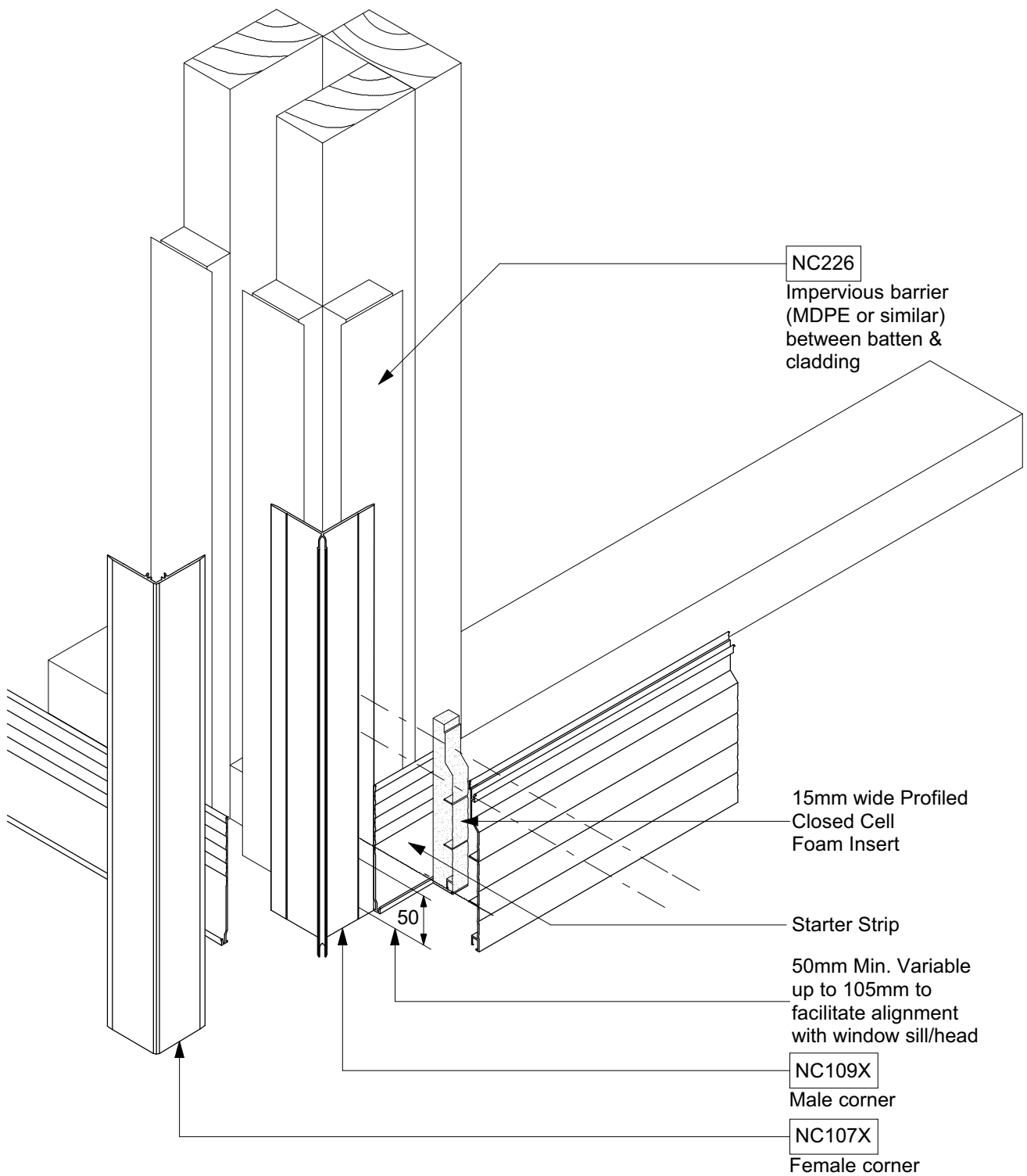
NW-H004C - Horizontal Cladding over Drained & Vented Cavity Starter; Timber Floor
Scale: 1:2

© NuWall Aluminium Cladding
www.nu-wall.co.nz
www.nu-wall.com.au



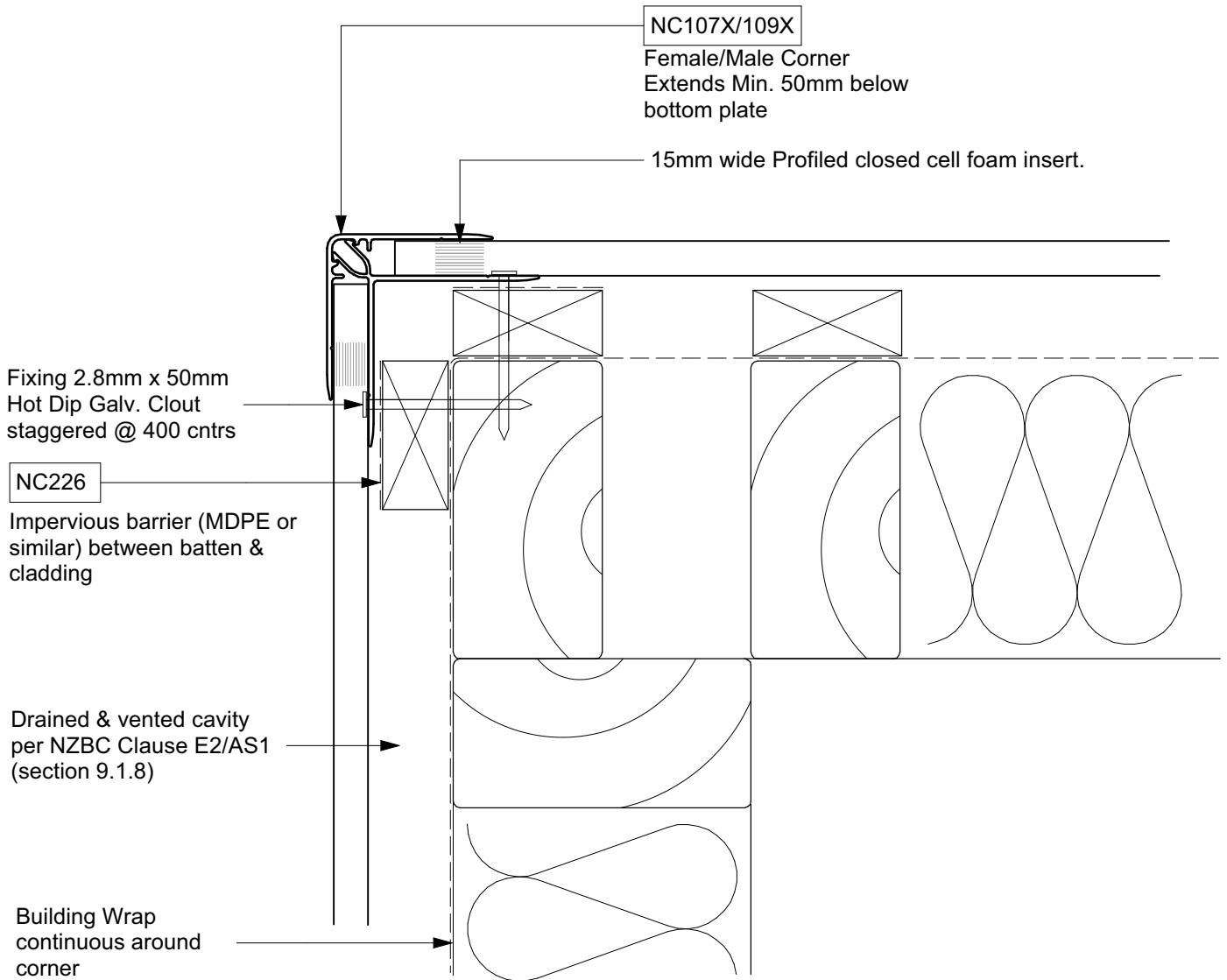
NW-H005C - Horizontal Cladding over Drained & Vented Cavity Starter; Waterproof Deck
Scale: NTS

© NuWall Aluminium Cladding
www.nu-wall.co.nz
www.nu-wall.com.au



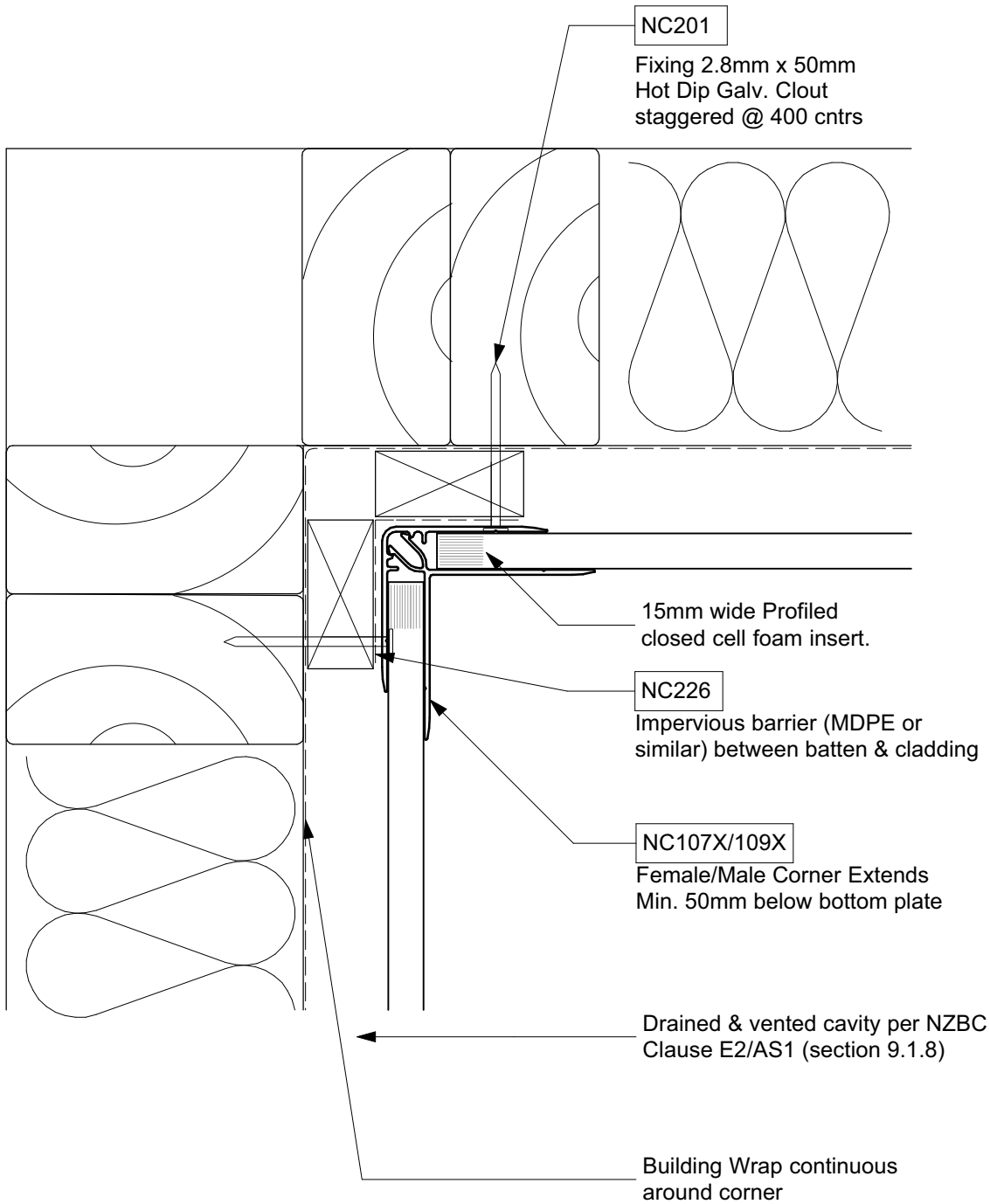
NW-H006C - Horizontal Cladding over Drained & Vented Cavity Starter Strip / Corner Isometric
Scale: NTS

© NuWall Aluminium Cladding
www.nu-wall.co.nz
www.nu-wall.com.au



NW-H007C - Horizontal Cladding over Drained & Vented Cavity 90° External Corner
Scale: 1:2

© NuWall Aluminium Cladding
www.nu-wall.co.nz
www.nu-wall.com.au



NW-H008C - Horizontal Cladding over Drained & Vented Cavity 90° Internal Corner
Scale: 1:2

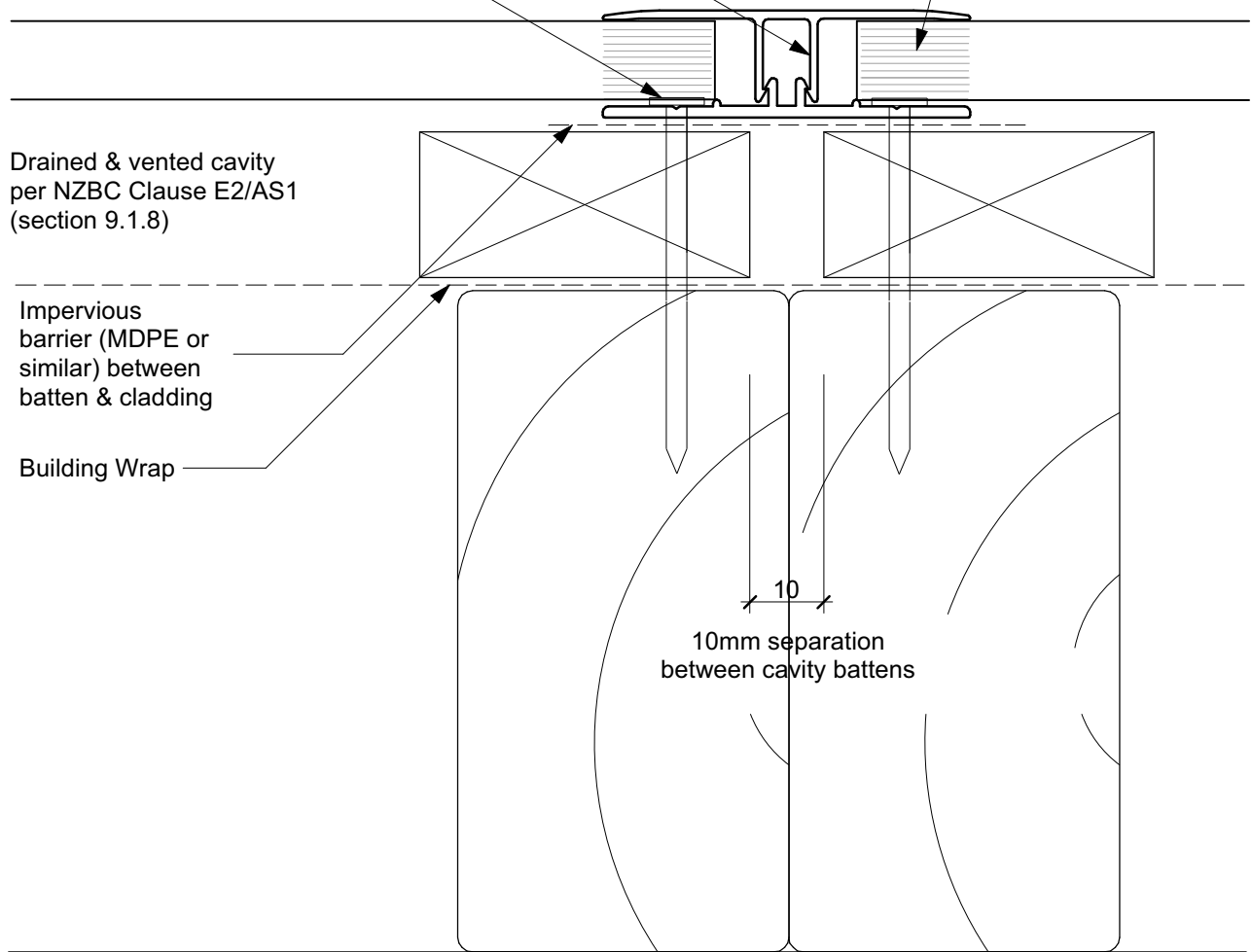
© NuWall Aluminium Cladding
www.nu-wall.co.nz
www.nu-wall.com.au

NC103/105X

Vertical Jointer extended Min 50mm below bottom plate.

Fixing 2.8mm x 50mm Hot Dip Galv. Clout @ 400 cntrs

15mm wide Profiled closed cell foam insert.



Drained & vented cavity per NZBC Clause E2/AS1 (section 9.1.8)

Impervious barrier (MDPE or similar) between batten & cladding

Building Wrap

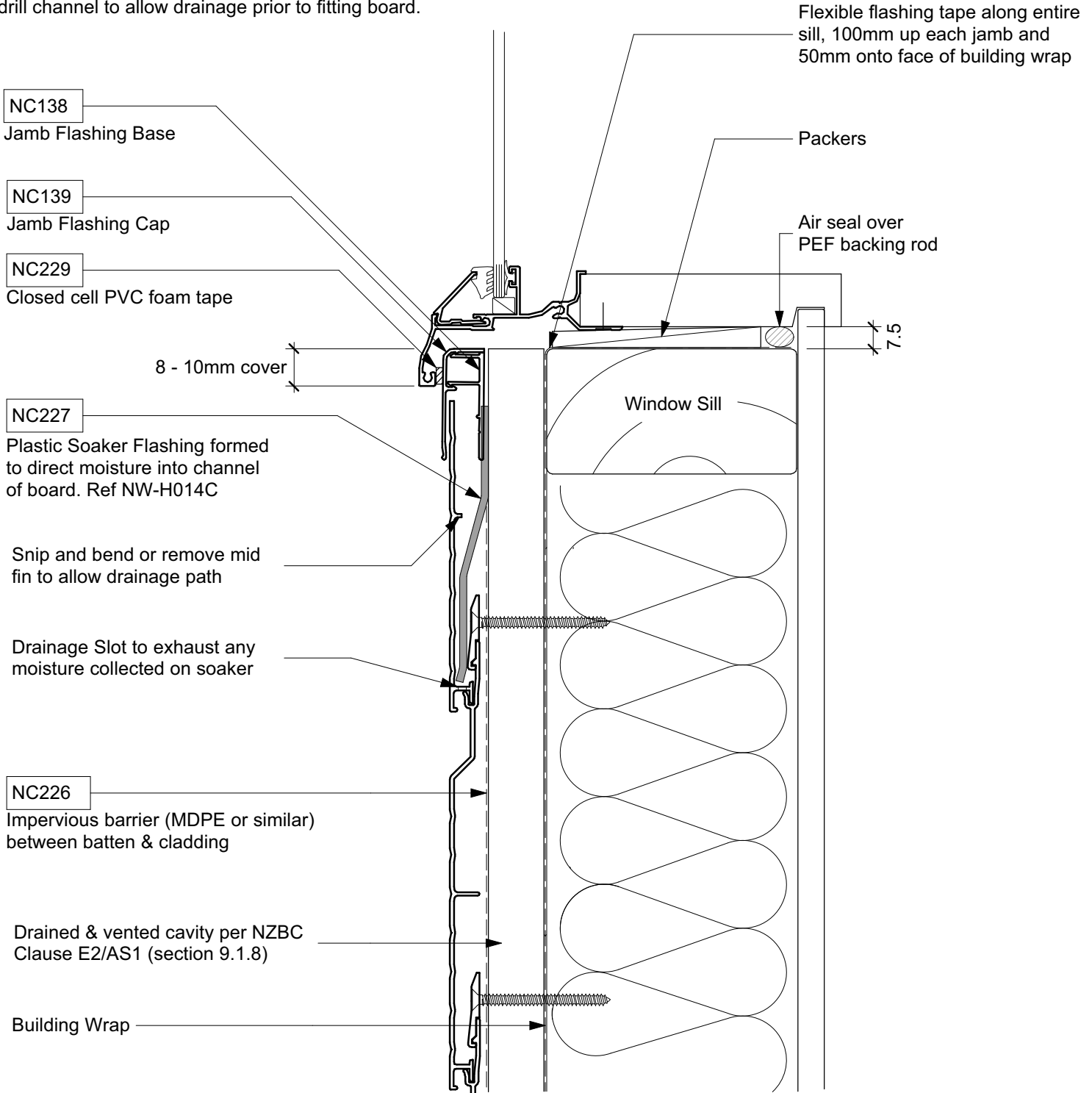
10
10mm separation between cavity battens

NW-H009C - Horizontal Cladding over Drained & Vented Cavity Vertical Joint
Scale: 1:1

© NuWall Aluminium Cladding
www.nu-wall.co.nz
www.nu-wall.com.au

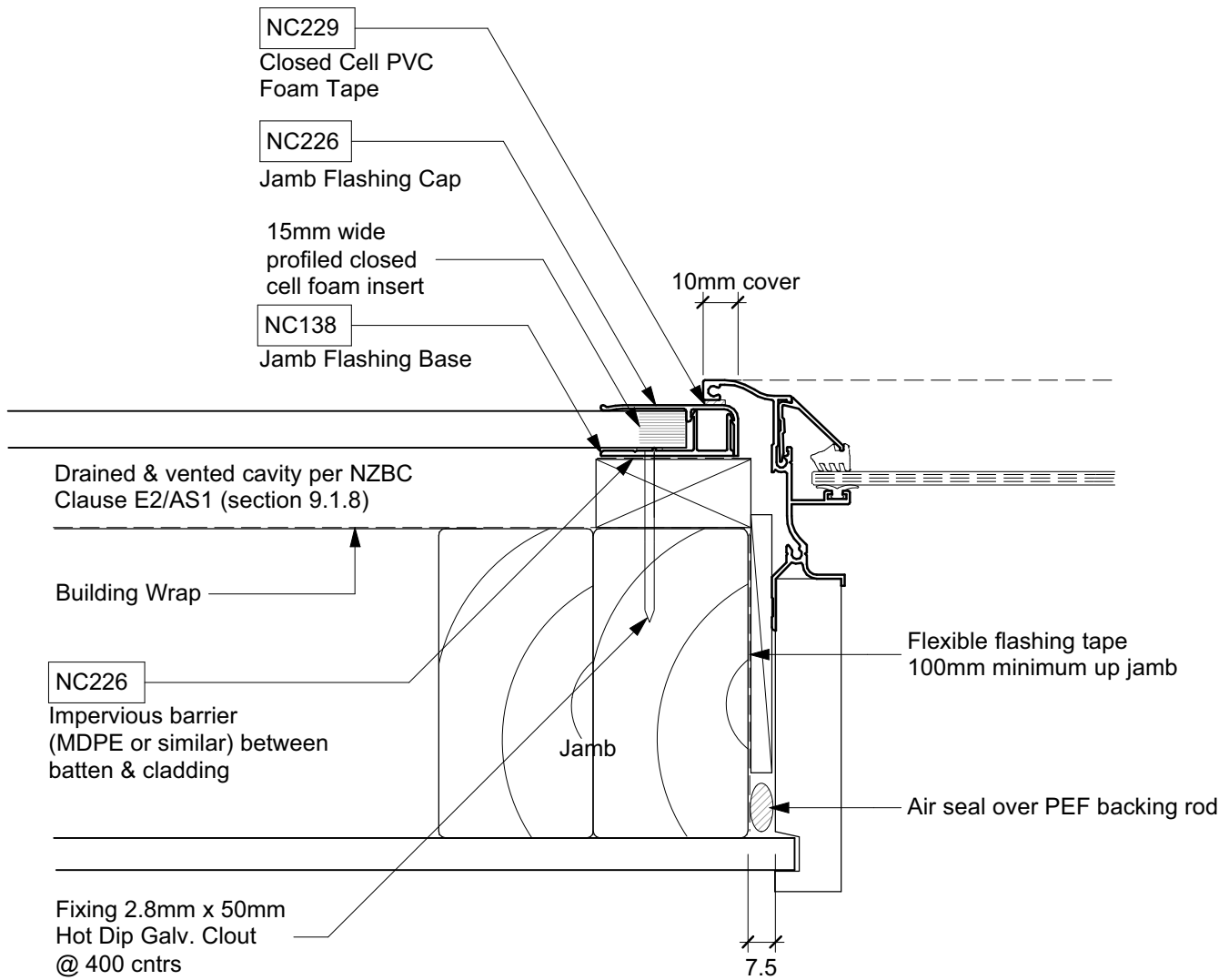
To ensure control of failure water:

1. Stop fitting boards at last full board below window.
2. Cut and fit soaker flashing and form to locate in channel of board as shown.
3. Fit Jamb Flashing base running over the soaker.
4. Cut board to fit around bottom of window. Cut away or drill channel to allow drainage prior to fitting board.



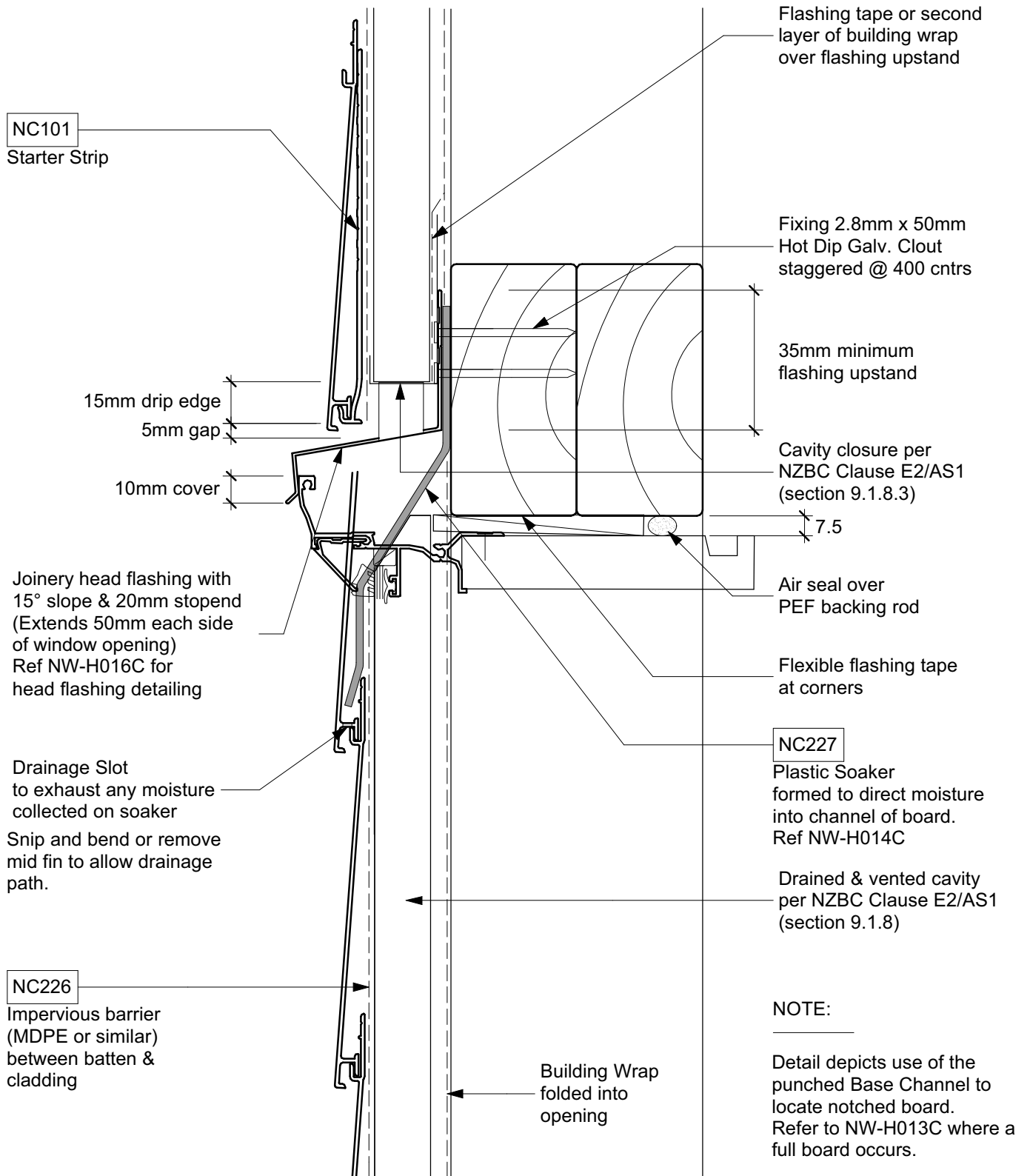
NW-H010C - Horizontal Cladding over Drained & Vented Cavity Window Sill
Scale: 1:2

© NuWall Aluminium Cladding
www.nu-wall.co.nz
www.nu-wall.com.au



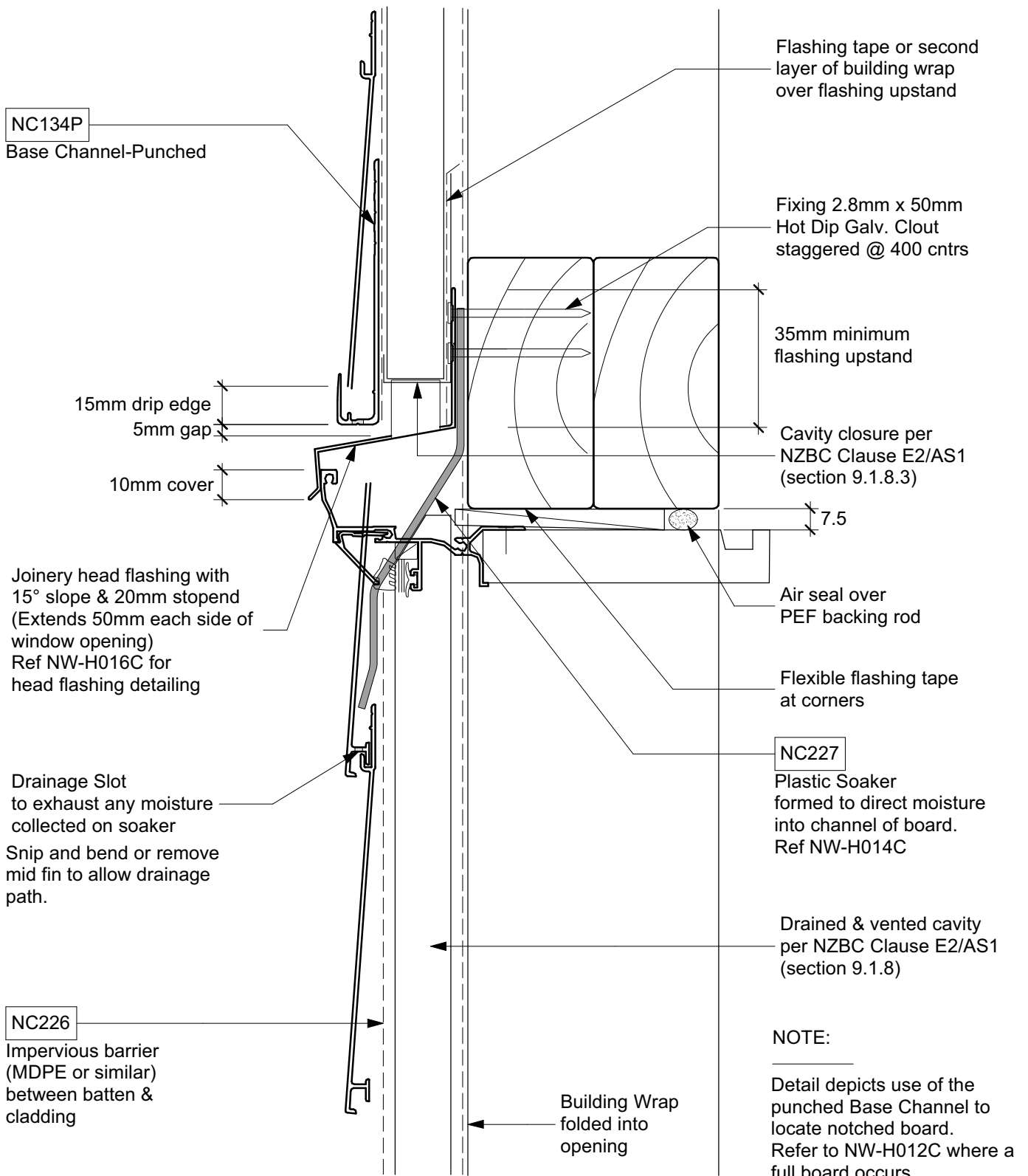
NW-H011C - Horizontal Cladding over Drained & Vented Cavity Window Jamb
Scale: 1:2

© NuWall Aluminium Cladding
www.nu-wall.co.nz
www.nu-wall.com.au



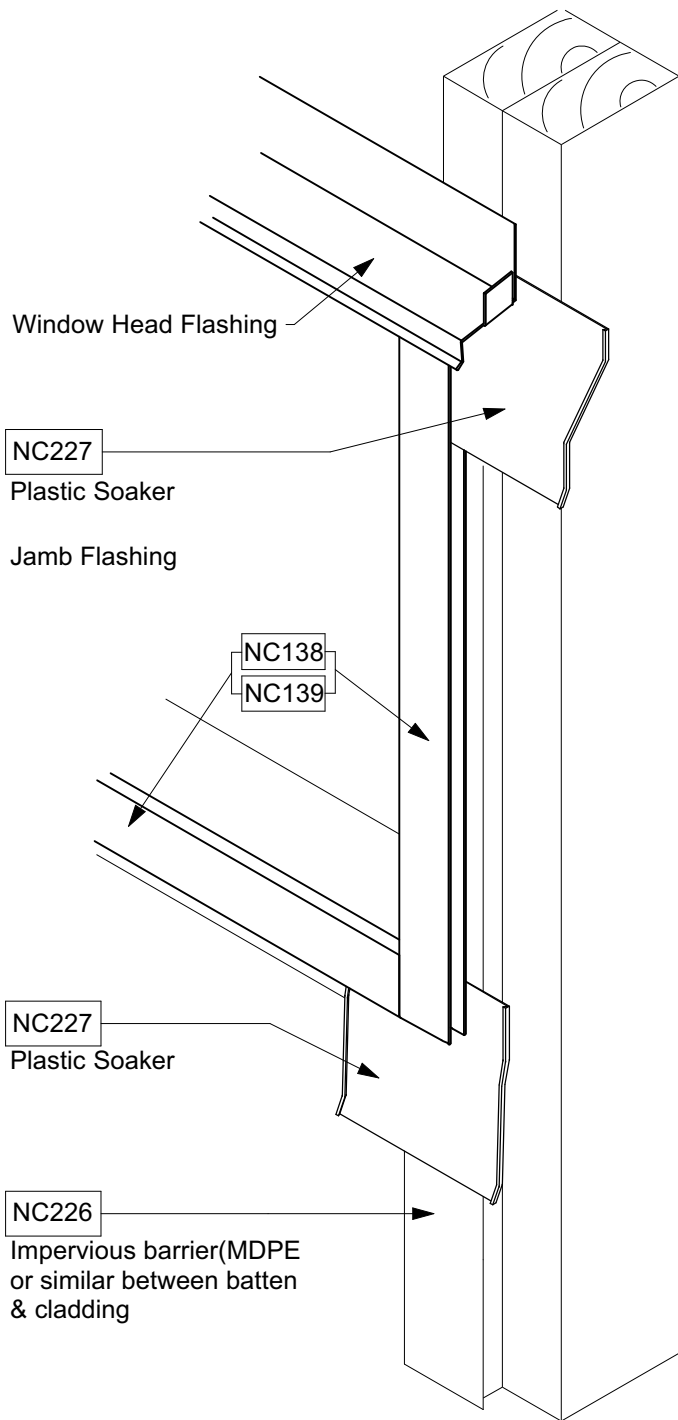
NW-H012C - Horizontal Cladding over Drained & Vented Cavity Window Head - Full Board
Scale: 1:2

© NuWall Aluminium Cladding
www.nu-wall.co.nz
www.nu-wall.com.au

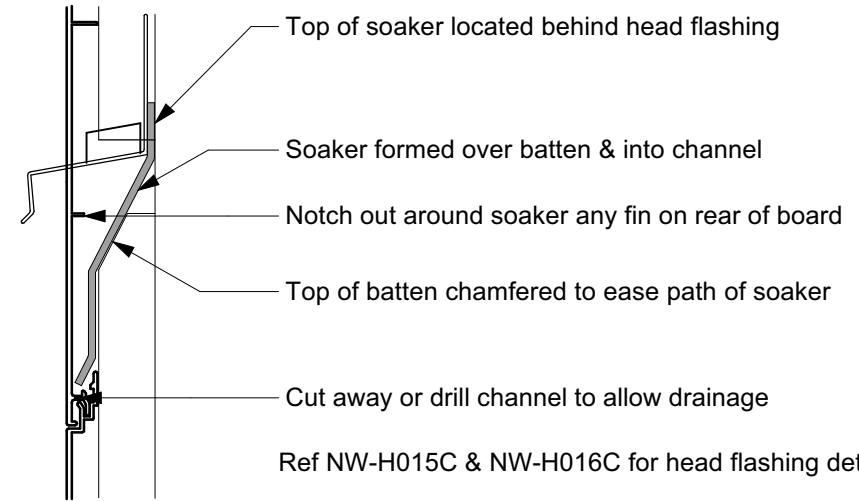
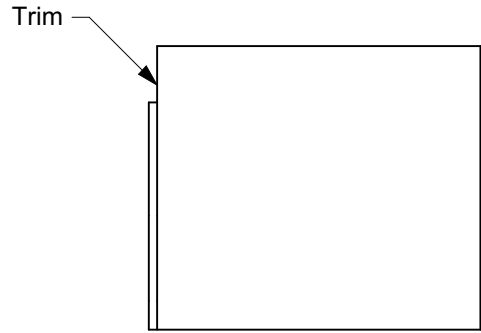


NW-H013C - Horizontal Cladding over Drained & Vented Cavity Window Head - Notched Board
Scale: 1:2

© NuWall Aluminium Cladding
www.nu-wall.co.nz
www.nu-wall.com.au



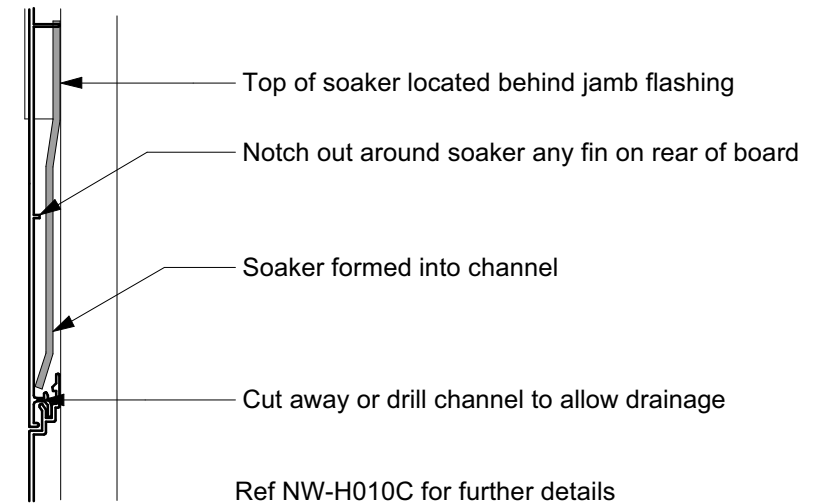
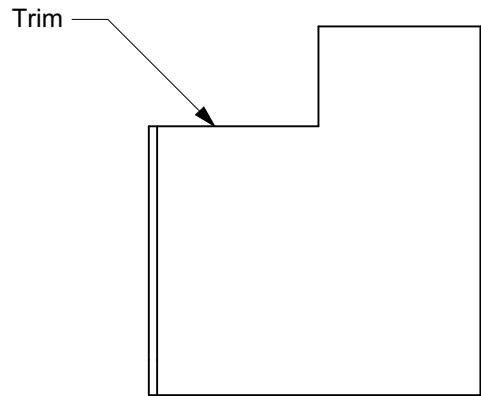
HEAD



Ref NW-H015C & NW-H016C for head flashing detail

1. Cut plastic soaker initially to approximate length-allow sufficient to fit top corner behind head flashing or jamb flashing base, and to lap over fixing tongue of cladding board at bottom.
2. Trim as shown then fit into place.
3. Cut to finished length required to provide drainage path into channel. Do not cut too long-soaker should "hang" in channel.

SILL

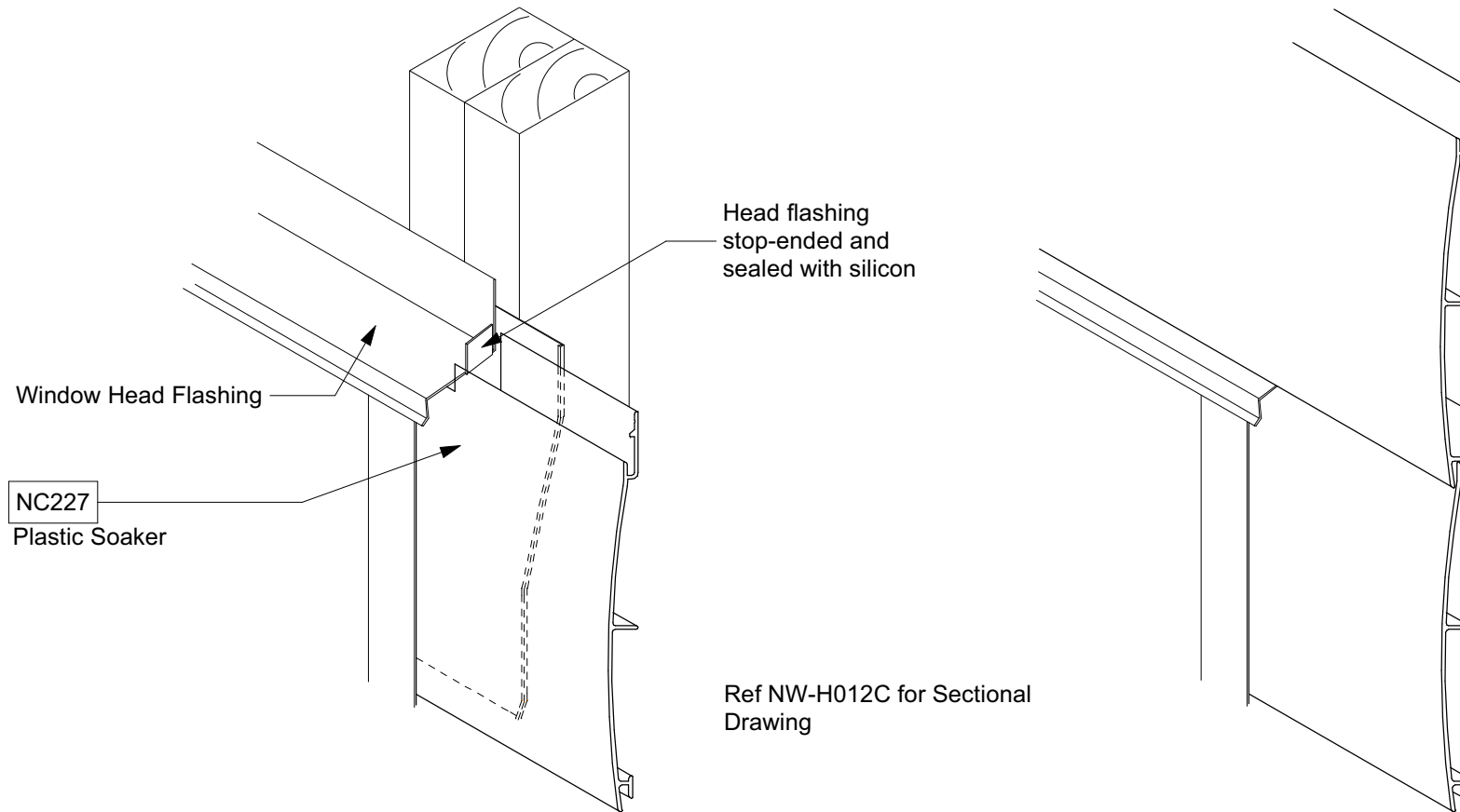


Ref NW-H010C for further details

NW-H014C - Horizontal Cladding over Drained & Vented Cavity Window Head & Sill Soaker Details
Scale: NTS

Junction prior to cladding around window head

Junction after cladding around window head

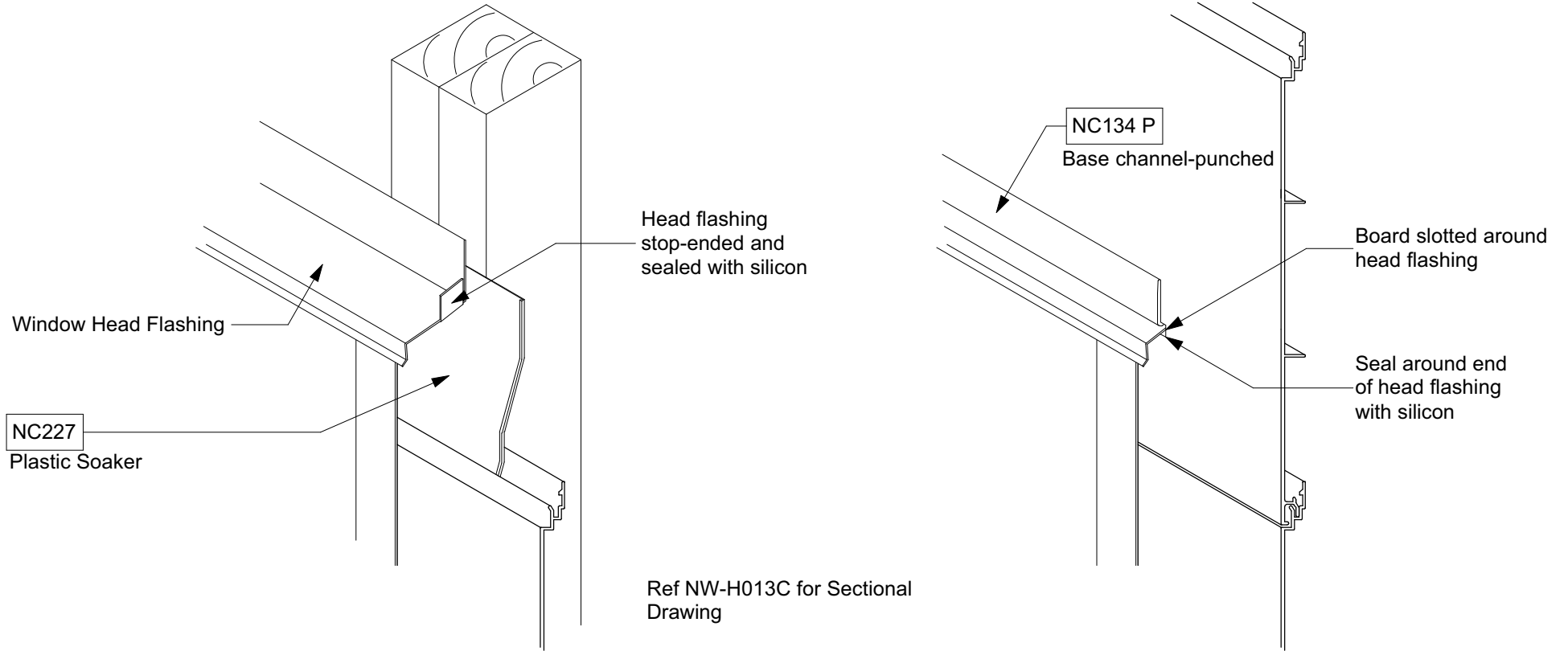


NW-H015C - Horizontal Cladding over Drained & Vented Cavity Window Head Flashing End Detail - Full Board
Scale: NTS

© NuWall Aluminium Cladding
www.nu-wall.co.nz
www.nu-wall.com.au

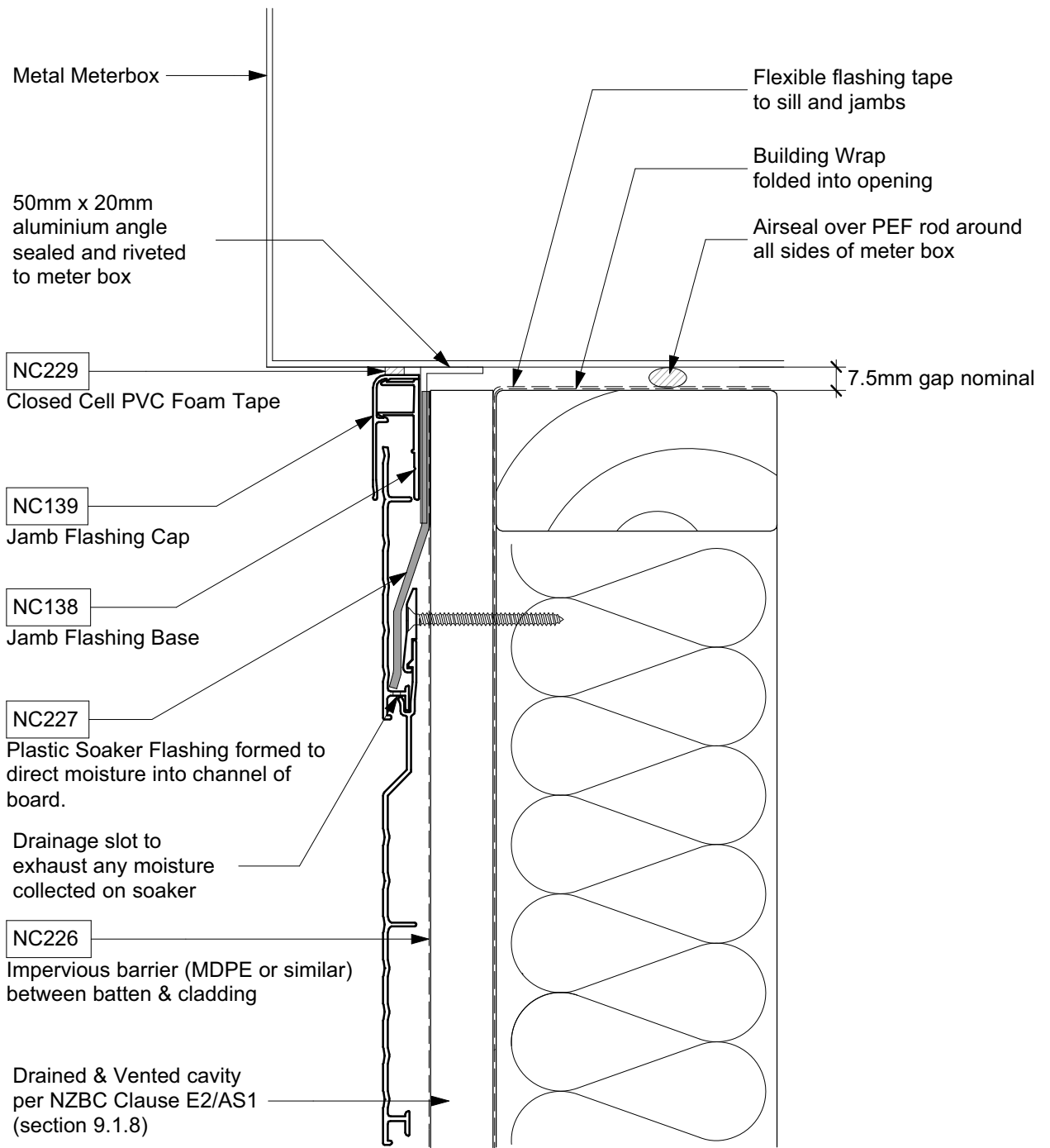
Junction prior to cladding around window head

Junction after cladding around window head



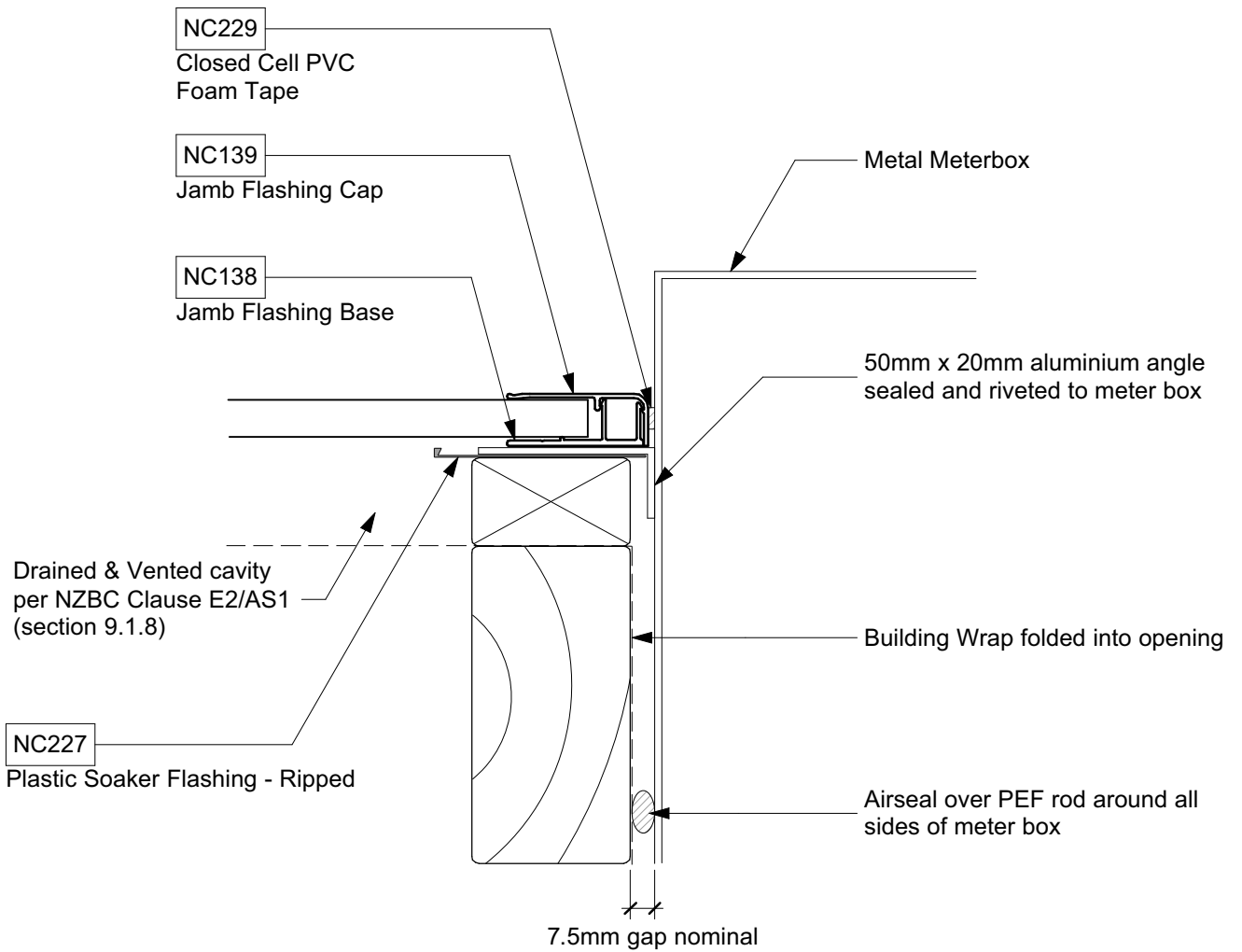
NW-H016C - Horizontal Cladding over Drained & Vented Cavity Window Head Flashing End Detail - Notched Board
Scale: NTS

© NuWall Aluminium Cladding
www.nu-wall.co.nz
www.nu-wall.com.au



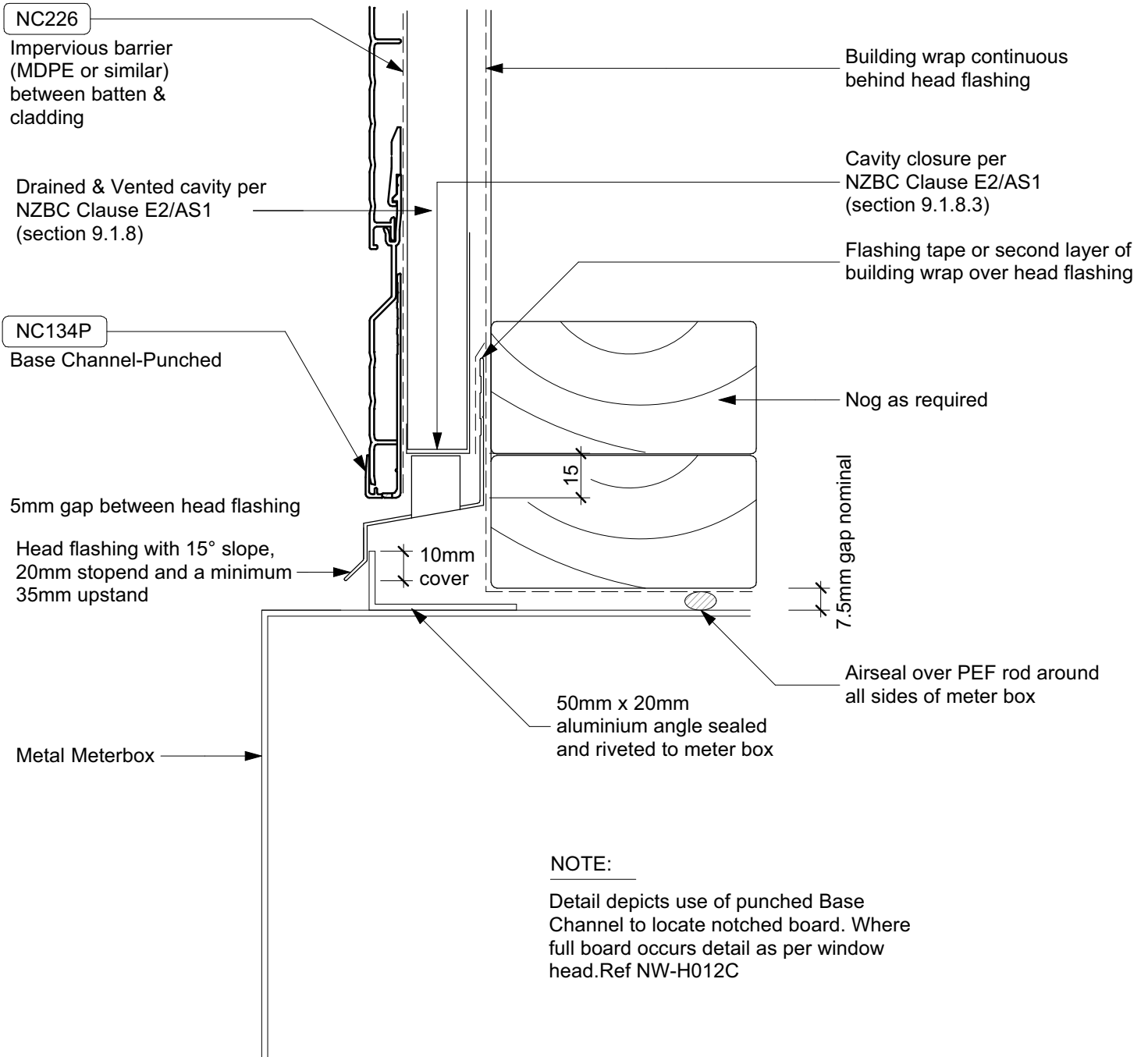
NW-H017C - Horizontal Cladding over Drained & Vented Cavity Meter Box Sill Detail
Scale: 1:2

© NuWall Aluminium Cladding
www.nu-wall.co.nz
www.nu-wall.com.au



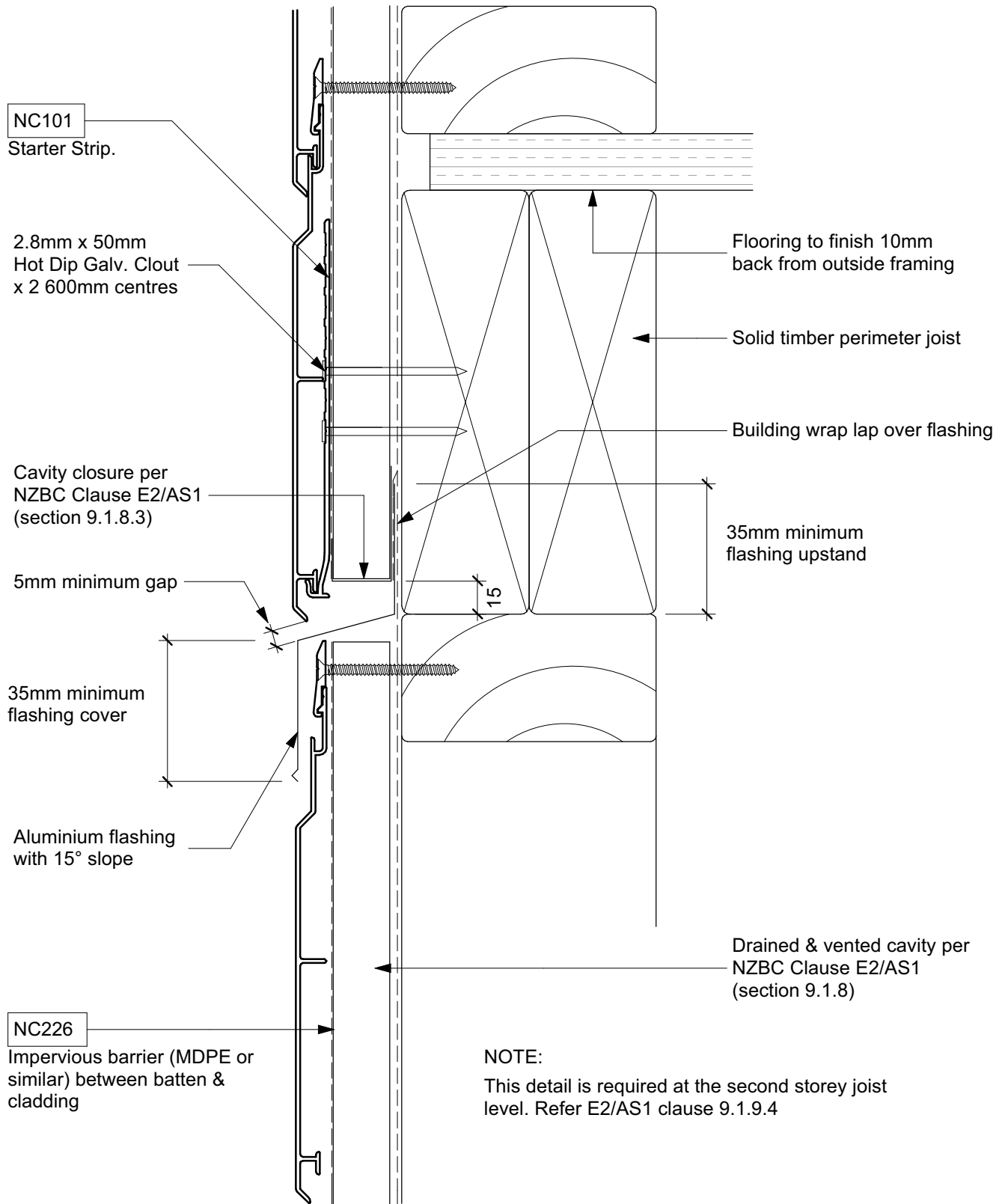
NW-H018C - Horizontal Cladding over Drained & Vented Cavity Meter Box Jamb Detail
Scale: 1:2

© NuWall Aluminium Cladding
www.nu-wall.co.nz
www.nu-wall.com.au



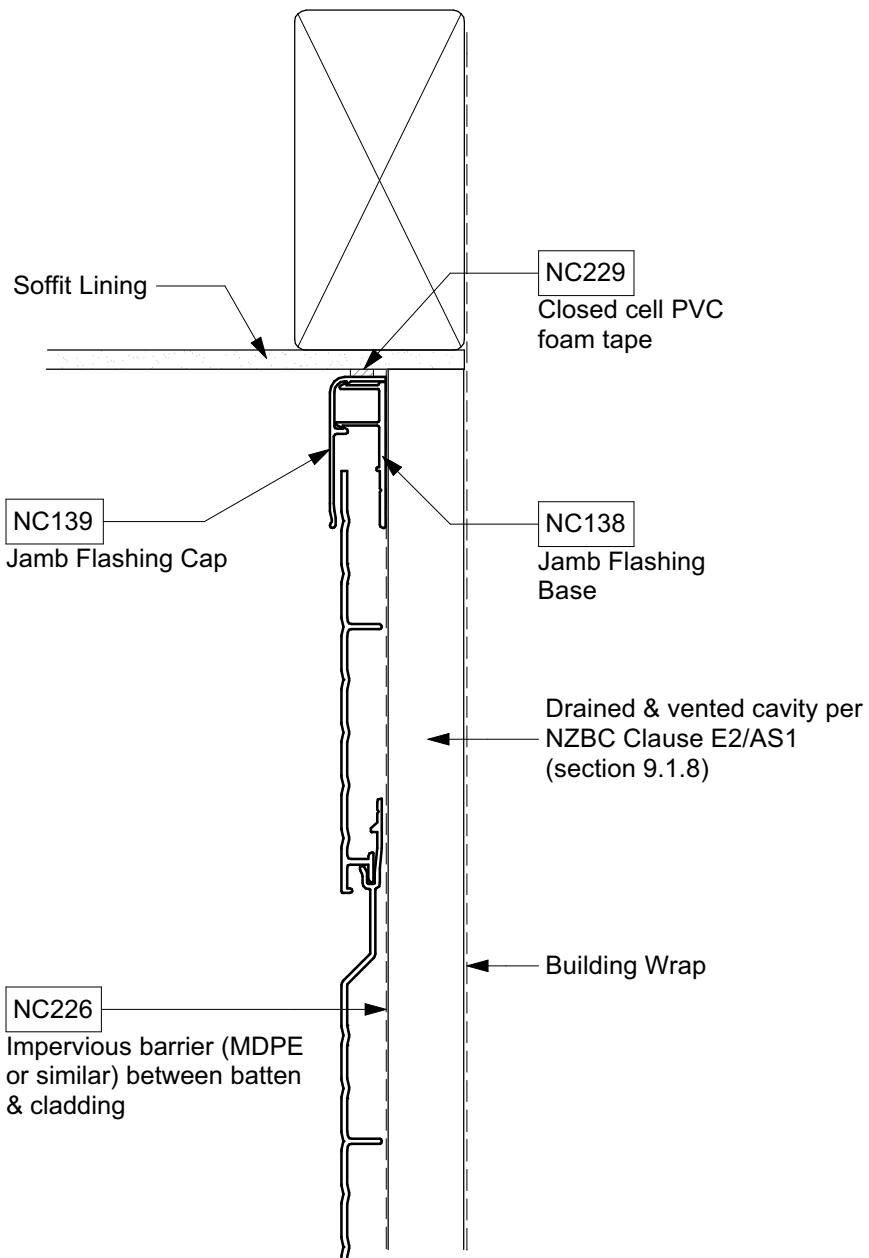
NW-H019C - Horizontal Cladding over Drained & Vented Cavity Meter Box Head Detail
Scale: 1:2

© NuWall Aluminium Cladding
www.nu-wall.co.nz
www.nu-wall.com.au



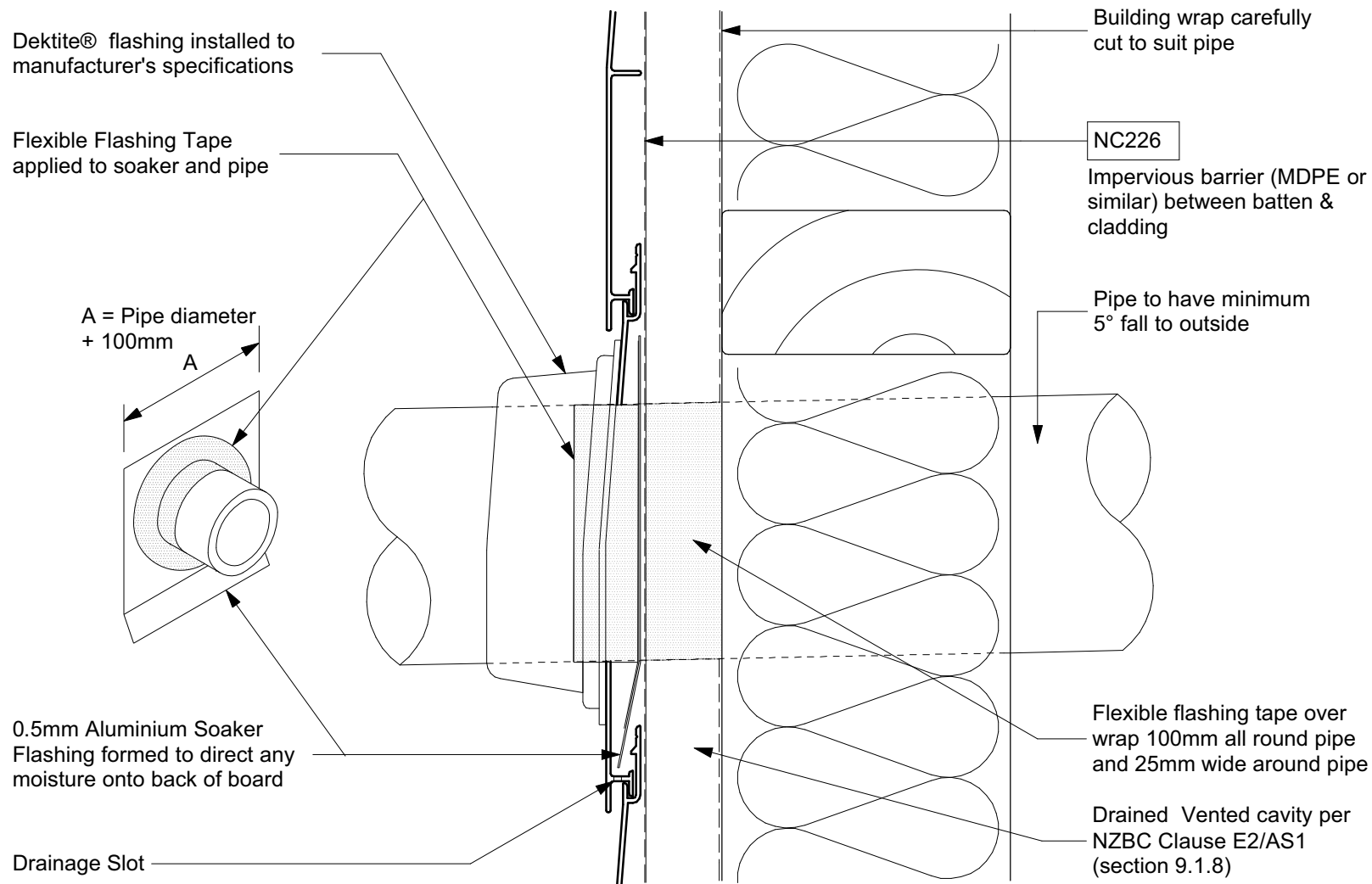
NW-H020C - Horizontal Cladding over Drained & Vented Cavity Inter-Story Drainage Joint
Scale: 1:2

© NuWall Aluminium Cladding
www.nu-wall.co.nz
www.nu-wall.com.au



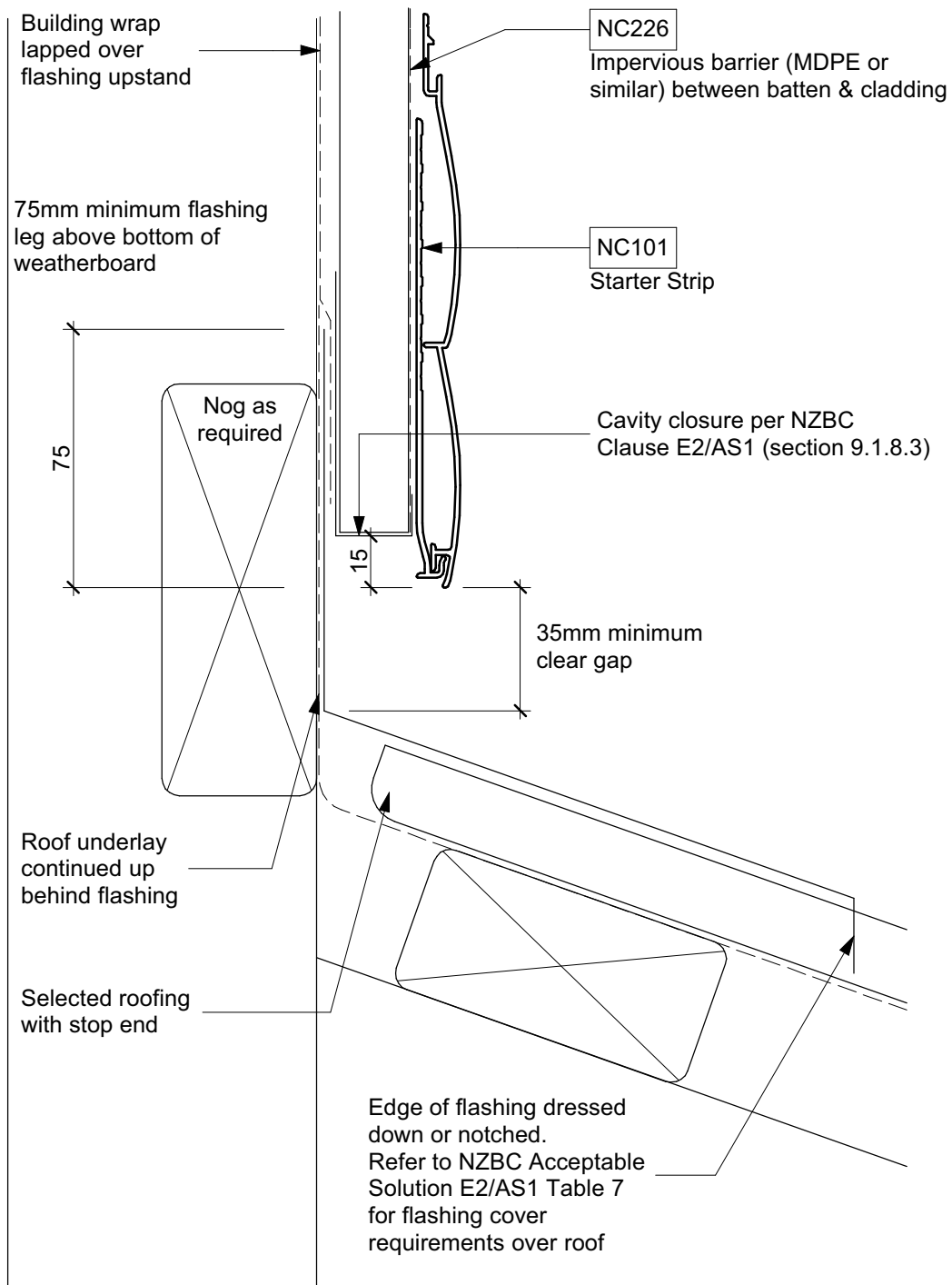
NW-H021C - Horizontal Cladding over Drained & Vented Cavity Soffit Trim
Scale: 1:2

© NuWall Aluminium Cladding
www.nu-wall.co.nz
www.nu-wall.com.au



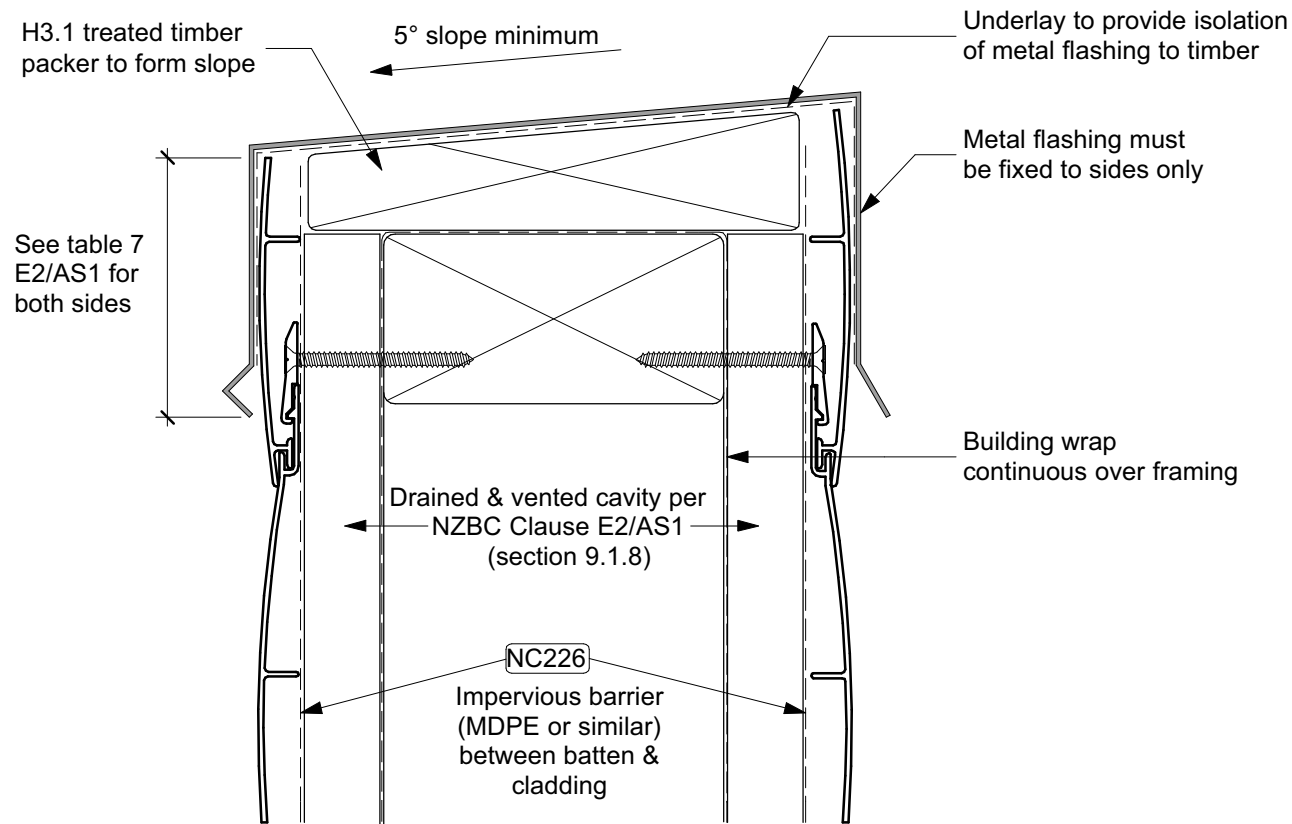
NW-H022C - Horizontal Cladding over Drained & Vented Cavity Pipe Penetration
Scale: 1:2

© NuWall Aluminium Cladding
www.nu-wall.co.nz
www.nu-wall.com.au



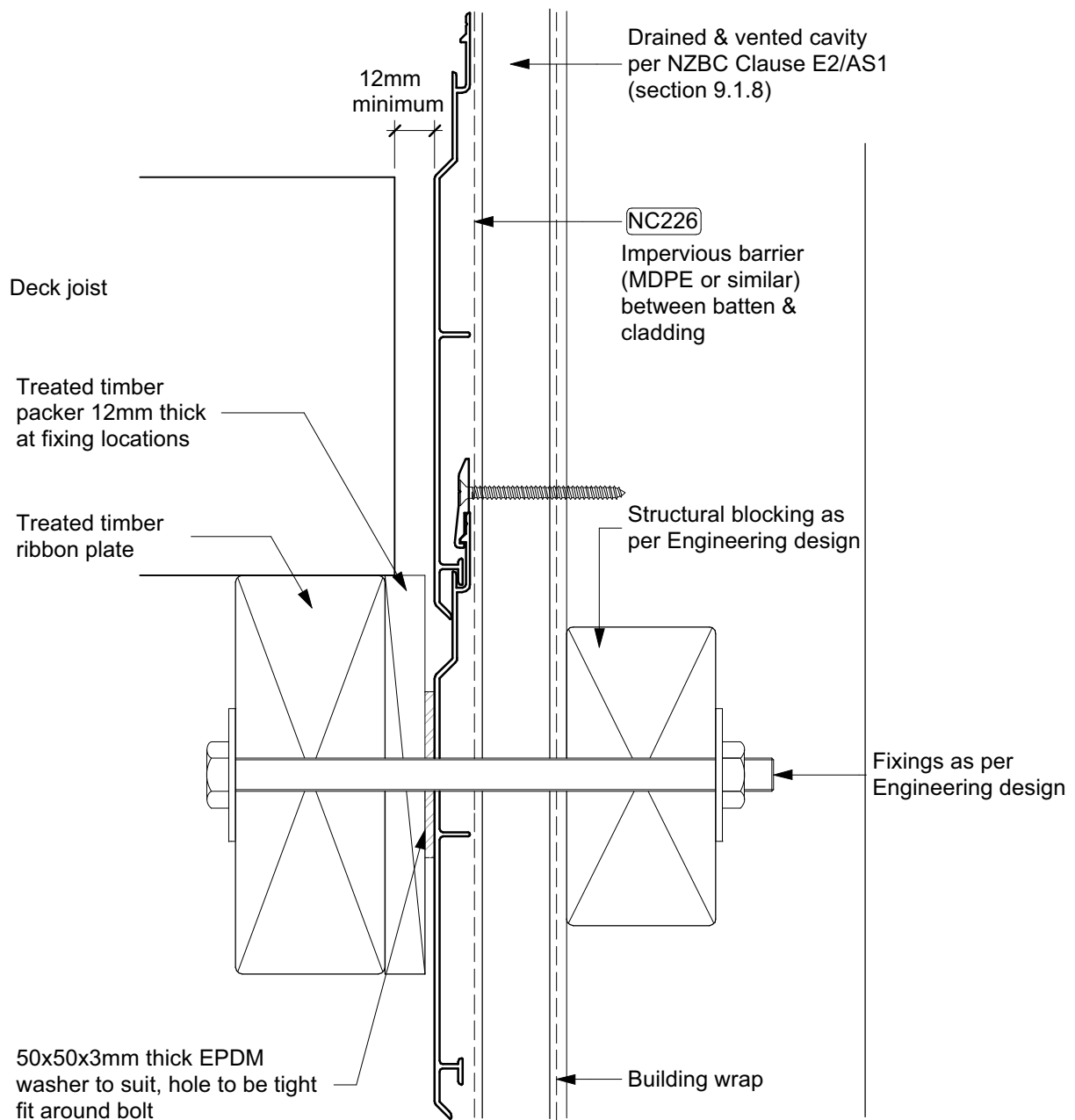
NW-H023C - Horizontal Cladding over Drained & Vented Cavity Roof / Wall Junction
Scale: 1:2

© NuWall Aluminium Cladding
www.nu-wall.co.nz
www.nu-wall.com.au



NW-H024C - Horizontal Cladding over Drained & Vented Cavity Parapet Flashing
 Scale: 1:2

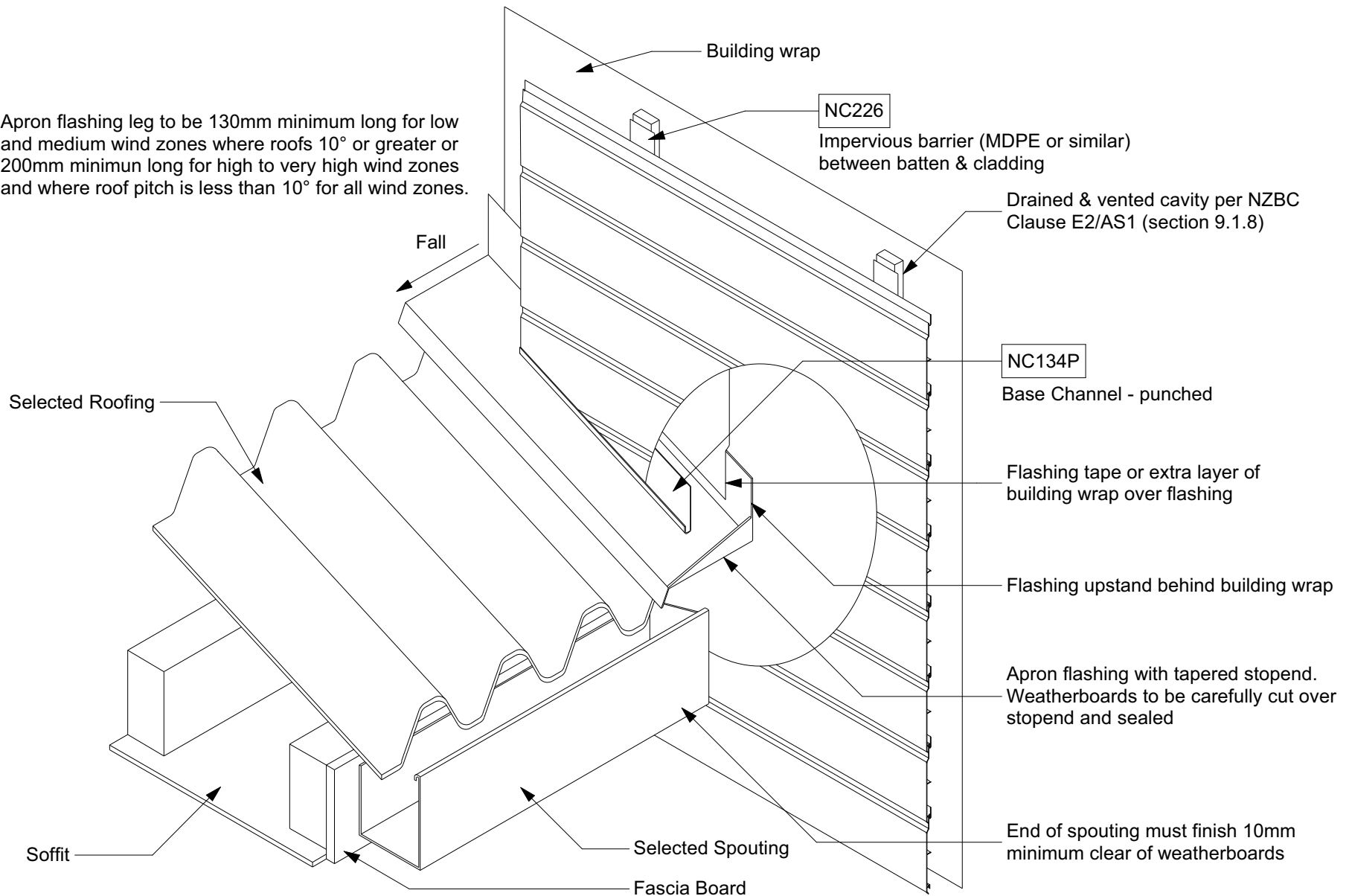
© NuWall Aluminium Cladding
www.nu-wall.co.nz
www.nu-wall.com.au



NW-H025C - Horizontal Cladding over Drained & Vented Cavity Deck Junction
 Scale: 1:2

© NuWall Aluminium Cladding
www.nu-wall.co.nz
www.nu-wall.com.au

Apron flashing leg to be 130mm minimum long for low and medium wind zones where roofs 10° or greater or 200mm minimum long for high to very high wind zones and where roof pitch is less than 10° for all wind zones.



NW-H026C - Horizontal Cladding over Drained & Vented Cavity Gutter / Wall Junction
Scale: NTS

© NuWall Aluminium Cladding
www.nu-wall.co.nz
www.nu-wall.com.au